

FOR ASSESSMENT AND TAXATION ONLY

S.W.1/4 S.W.1/4 SEC.29 T.13S. R.1E. W.M.

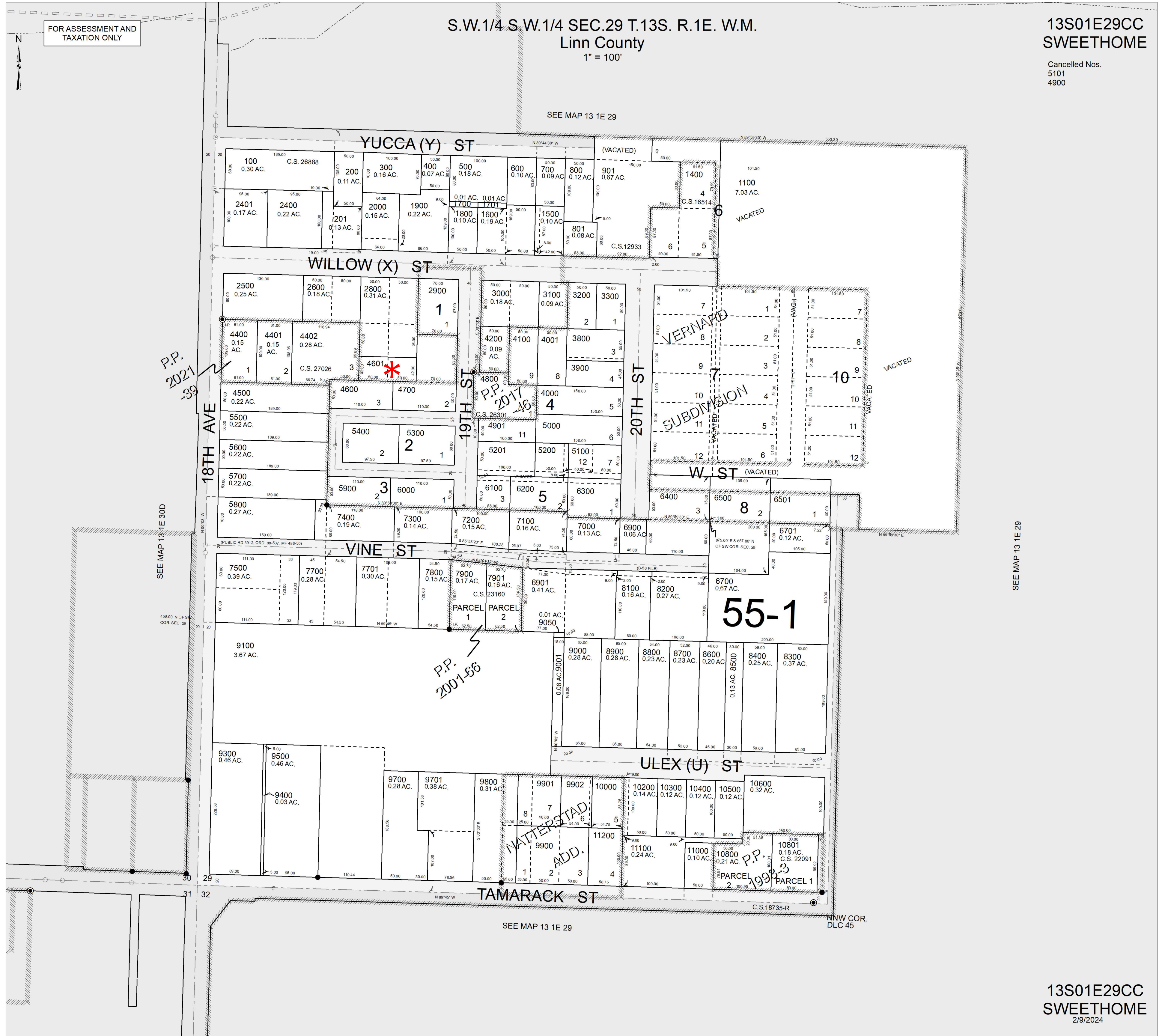
Linn County

1" = 100'

13S01E29CC
SWEETHOME

Cancelled Nos.
5101
4900

SEE MAP 13 1E 29



P.P.
2021-39

P.P.
2001-56

WATERSTAD
ADD.

55-1

SEE MAP 13 1E 30D

SEE MAP 13 1E 29

SEE MAP 13 1E 29

13S01E29CC
SWEETHOME
2/9/2024