



# Linn County Road Department

*Providing safe and efficient transportation to  
citizens and visitors of Linn County.*

January 29, 2025

## ADDENDUM NO. 1

**TO:** All Plan Holders and/or Prospective Bidders

**RE:** Cox Creek, Goldfish Farm Road Bridge Replacement  
Bid Opening, February 18, 2025, 9:35 PDT, Linn County Courthouse

**FROM:** Daineal Malone, P.E., County Engineer *DM*

**The following changes are hereby made to the Cox Creek, Goldfish Farm Road Bridge Replacement Project Bidding Documents:**

### GENERAL CONDITIONS

The 2021 General Conditions included on the Linn County website and the OregonBuys website have been updated to reflect the 2024 General Conditions for Construction for the Linn County Road Department.

### PLANS

**Sheet 6** – Elimination of callout No 11.

**Sheet 9** – Revision to the storm drain outfall.

**Sheet 11** – Revision to the storm drain outfall pipe P-4.

**Sheet 13** – Revision to the storm drain outfall.

**Sheet BR-03** – Insert Sheet BR-03 after Plan Sheet BR-02.

**Revised Plan Sheets are included with this addendum.**

### BID SCHEDULE

**Bid Item 23, Mainline Video Inspection**, change the SPEC number from “00445” to “00415”.

**Bid Item 39, Furnish PP12x0.375 Steel Piles**, replace the Item title with “Furnish PP12.75x0.375 Steel Piles”.

**Bid Item 40, Drive PP12x0.375 Steel Piles**, replace the Item title with “Drive PP12.75x0.375 Steel Piles”.

**Bid Item 42, PP12x0.375 Steel Pile Splices**, replace the Item title with "PP12.75x0.375 Steel Pile Splices".

**Bid Item 43, Reinforcement, Grade 60**, change the QUANT. number from "16,630" to "All".

**Bid Item 75, Shrubs, #3 Container**, renumber this bid item to read "76".

**Bid Item 76, Groundcover, #1 Container**, renumber this bid item to read "77".

**Bid Item 79, Removing and Rebuilding Fence**, delete this bid item in its entirety.

**Bid Item 80, Single Mailbox Support**, renumber this bid item to read "79".

**Bid Item 81, 2 Inch Combination Air Release / Air Vacuum Valve Assembly**, renumber this bid item to read "80".

**Bid Item 82, 2 Inch Water Service Line**, renumber this bid item to read "81".

**Bid Item 83, 2 Inch Water Meter Assembly**, renumber this bid item to read "82".

**A revised bid schedule is included with this addendum.** The above edits have been included in the revised bid schedule.

These changes will be included in the Contract for this Project. It is understood that your bid will be submitted accordingly.

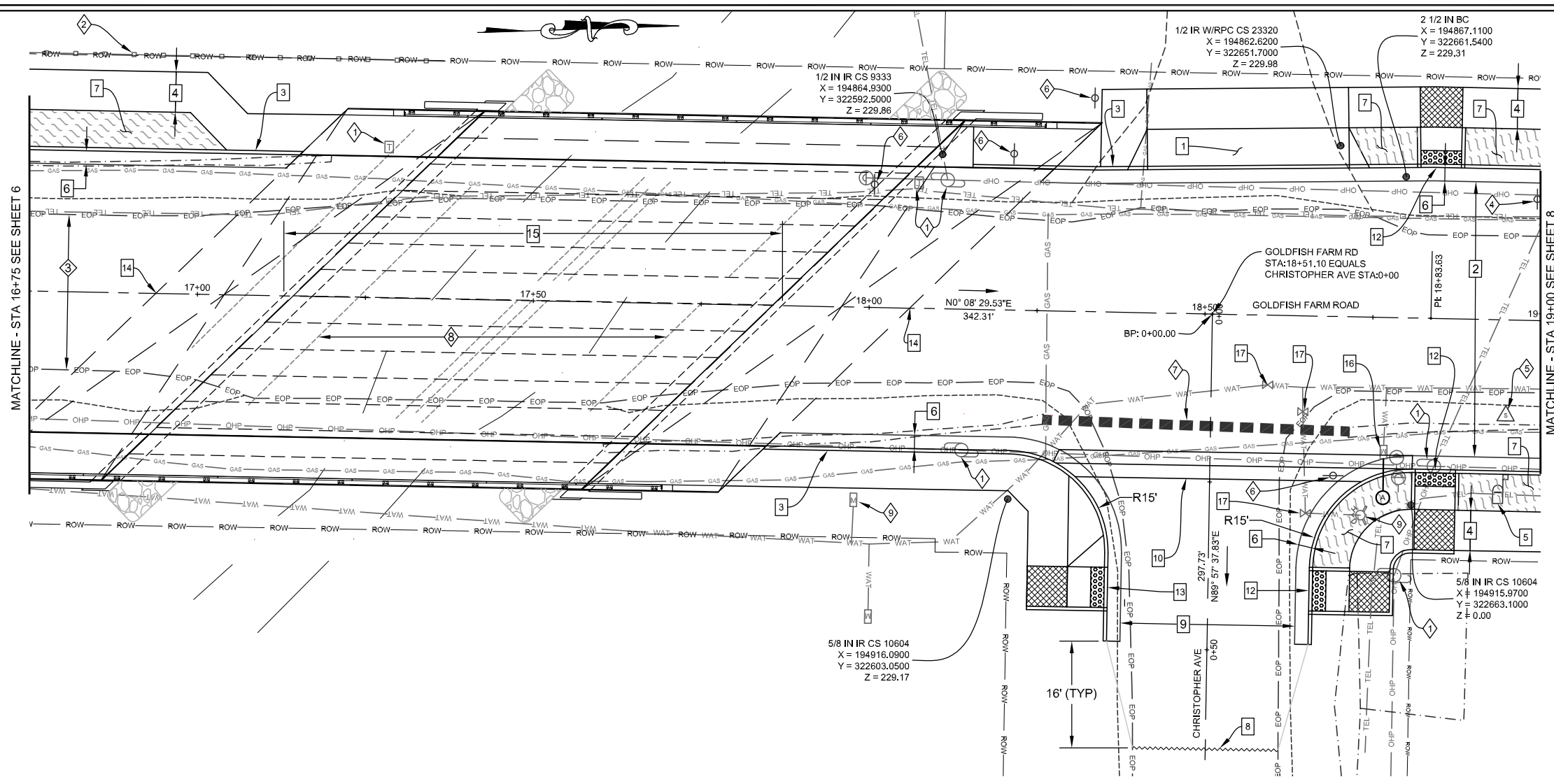
All Bidders will acknowledge receipt of this addendum by returning a signed copy of this addendum with the bid package. Proposals without this addendum may be rejected.

\_\_\_\_\_  
Company Name

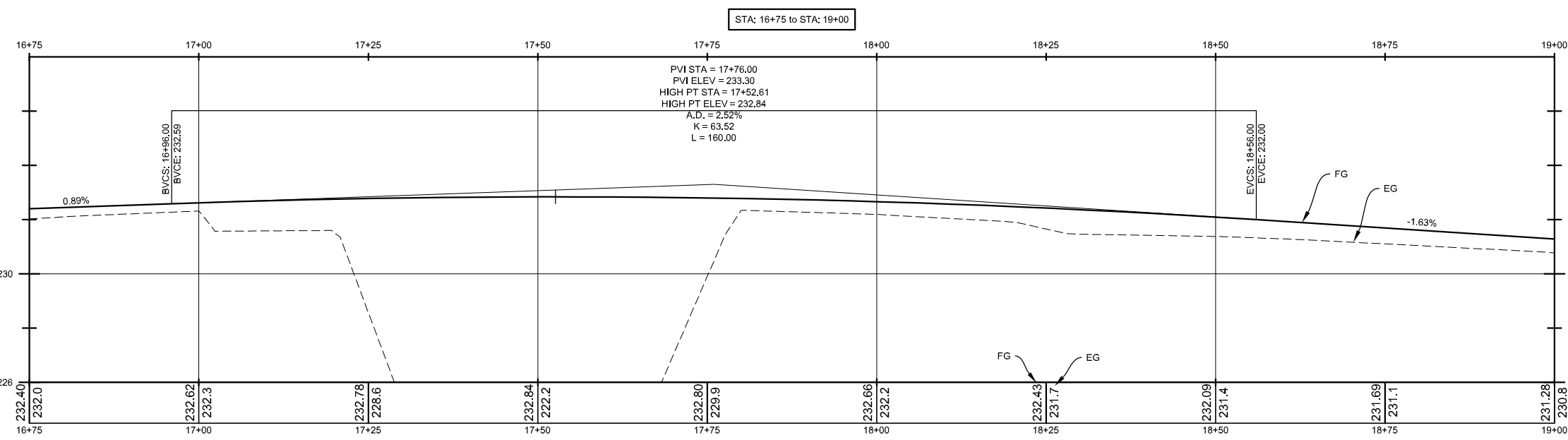
\_\_\_\_\_  
Authorized Signature

\_\_\_\_\_  
Printed Authorized Name

\_\_\_\_\_  
Date of Signature

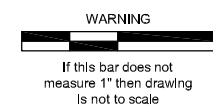


- 1 EXISTING UTILITY TO BE RELOCATED BY OTHERS
  - 2 RETAIN AND PROTECT EXISTING FENCE FROM STA:16+46 TO STA: 17+36 LT
  - 3 REMOVE EXISTING ASPHALT FROM EOP TO EOP STA: 14+65 TO STA: 21+34
  - 4 REMOVE EXISTING SIGN AT STA: 18+99 LT
  - 5 REMOVE AND PROTECT EXISTING MAILBOX AT STA: 18+95 RT
  - 6 REMOVE AND RETAIN EXISTING SIGNS AT STA: 18+21 LT, STA: 18+33 LT AND STA: 18+69 RT
  - 7 REMOVE EXISTING STORM PIPE FROM STA: 18+26 TO STA: 18+72 RT
  - 8 REMOVE EXISTING BRIDGE
  - 9 RETAIN AND PROTECT EXISTING UTILITY
- 
- 1 INSTALL COMMERCIAL DRIVEWAY AT ACCESS CENTERLINE STA: 18+55.89 LT, W= 30' PER COA DWG 308
  - 2 CONSTRUCT ROADWAY SECTION FROM STA: 15+06 TO SOUTH BRIDGE APPROACH PANEL AT APPROX. STA: 16+93.96 AND FROM NORTH BRIDGE APPROACH PANEL AT APPROX. STA: 18+05.98 TO STA:21+34. SEE SHEET 4 FOR TYPICAL SECTIONS
  - 3 INSTALL CURBSIDE SIDEWALK FROM STA: 17+03.94 TO STA: 17+15.46 LT, STA: 18+15.05 TO STA: 18+38.07 LT AND STA: 17+84.48 TO STA: 18+30.22 RT
  - 4 INSTALL 6' WIDE SETBACK SIDEWALK FROM STA: 16+35.87 TO STA: 17+03.94 LT, STA: 18+34.05 TO STA: 20+43.06 LT AND STA: 18+72.25 TO STA: 21+26.48 RT. PER COA DWG 313
  - 5 INSTALL MAILBOX ON SINGLE MAILBOX SUPPORT PER COA DWG 202A AT STA: 18+94 RT WITHIN THE LANDSCAPE STRIP. INSTALL TEMPORARY MAILBOX POST TO ALLOW MAIL SERVICE TO CONTINUE DURING CONSTRUCTION
  - 6 INSTALL 30" CURB AND GUTTER FROM STA: 15+05.61 TO STA: 17+15.46 LT, STA: 17+84.48 TO 18+38.27 RT, STA: 18+24.98 TO STA: 20+49.99 LT AND STA: 18+64.27 TO STA: 21+29.51 RT. PER COA DWG 304
  - 7 INSTALL 5.5' LANDSCAPE STRIP FROM STA: 16+35 TO STA: 17+03 LT, STA: 18+66.75 TO STA: 18+81.22 RT, STA: 18+70.88 TO STA: 18+81.25 LT, STA: 18+88.25 TO STA: 19+29.03 LT AND STA: 18+88.25 TO STA: 19+66 RT. SEE SHEET LS-01 FOR DETAILS
  - 8 SAWCUT AND REMOVE EXISTING ASPHALT FROM EDGE OF PAVEMENT TO EDGE OF PAVEMENT AT CHRISTOPHER AVE STA: 0+65
  - 9 CONSTRUCT ROADWAY SECTION FROM CHRISTOPHER AVE STA: 0+20.56 TO STA: 0+49.06. SEE SHEET 4 FOR TYPICAL SECTIONS
  - 10 CONSTRUCT VALLEY GUTTER FROM STA: 18+28.47 TO STA: 18+81.30 RT PER COA DWG 305
  - 11 RELOCATE FENCE STA: 17+06 TO 17+36 LT
  - 12 INSTALL PERPENDICULAR CURB RAMP OPTION "PR-1" AT RAMP CENTERLINE STA: 18+36.26 RT, STA: 18+66.26 RT AND STA: 18+84.75 LT/RT PER RD902, RD904, RD912, DET1752 AND DETAILS SHEET CR-02
  - 13 INSTALL PERPENDICULAR CURB RAMP WITH SINGLE FLARE AT RAMP CENTERLINE STA: 18+36.26 RT PER RD902, RD904, RD910 AND DETAILS SHEET CR-02
  - 14 TRANSITION 1% CROSS SLOPE ON BRIDGE TO 2% AT BRIDGE APPROACHES
  - 15 CONSTRUCT BRIDGE AS SHOWN ON SHEETS BR-01 TO BR-09
  - 16 REPLACE EXISTING VALVE WITH NEW COMBINATION AIR / VACUUM RELEASE VALVE IN NEW PLANTER STRIP PER COA DWG 509
  - 17 ADJUST EXISTING UTILITY BOX AT STA: 18+59 RT, 18+64 RT AND 18+65 RT



- GENERAL NOTES:**
- 1) RETAIN AND PROTECT EXISTING UTILITIES (FIELD VERIFY LOCATIONS)
  - 2) PERMANENTLY SEED ANY SOIL AREAS DISTURBED DURING CONSTRUCTION
  - 3) SEE SHEET 4 FOR TYPICAL SECTIONS
  - 4) SEE SHEET 15 FOR CURB RAMP DETAILS
  - 5) SEE SHEET 11 FOR STORM DRAIN TABLES AND DETAILS
  - 6) SEE SHEETS LS-01 AND LS-02 FOR PLANTING PLAN AND DETAILS

Note:  
Elevations are based on NAVD88 (M.S.L. = 0.00)



Digitally signed by Daineal Malone  
Date: 2025.01.28 16:28:51-08'00'



**LINN COUNTY ROAD DEPARTMENT**  
3010 FERRY STREET SW  
ALBANY, OREGON 97322  
PHONE: (541) 967-3919  
FAX: (541) 924-0202  
E-MAIL: Roads@co.linn.or.us

**COUNTY COMMISSION**  
ROGER NYQUIST  
CHAIRMAN  
WILLIAM TUCKER  
SHERRIE SPRENGER

**ROADMASTER**  
WAYNE MINK, P.E.  
**COUNTY ENGINEER**  
DAINEAL MALONE, P.E.

DATE:	REVISION:	BY:	BRIDGE NO:	DATE:
1/28/25	NO FENCE TO BE RELOCATED	SSM	0328-0036	1/15/2025
			PROJECT NO: CB2101	
			TRS: T, 11 S., R, 03 W., SEC. 10	
			DESIGNED BY: D. Malone	CHECKED BY: D. Malone
			DRAFTED BY: S. MacLean	REVIEWED BY: K. Groom

**GOLDFISH FARM ROAD**  
**COX CREEK BRIDGE**

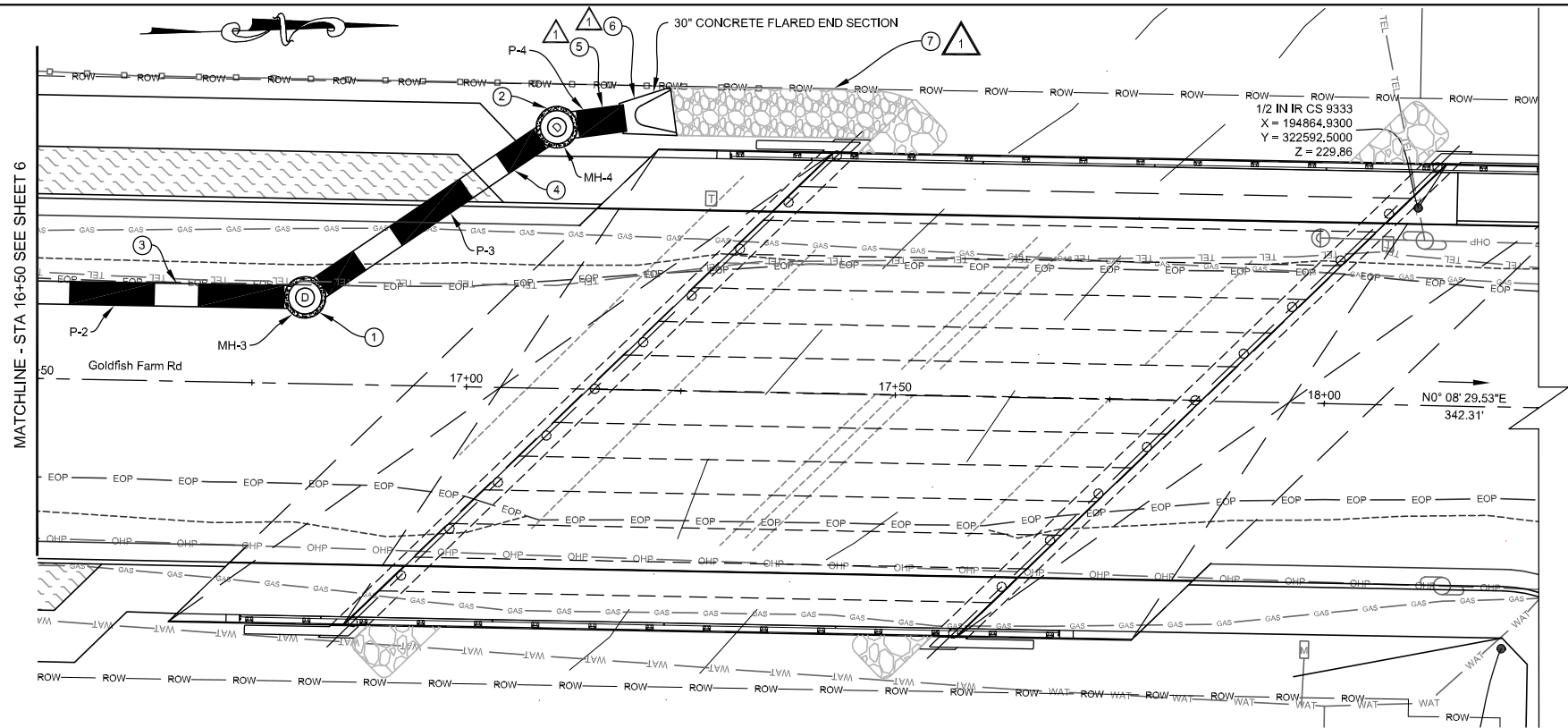
LINN COUNTY

**PLAN & PROFILE**  
STA:16+75 to STA:19+00

SCALE: H 1" = 20'  
V 1" = 5'

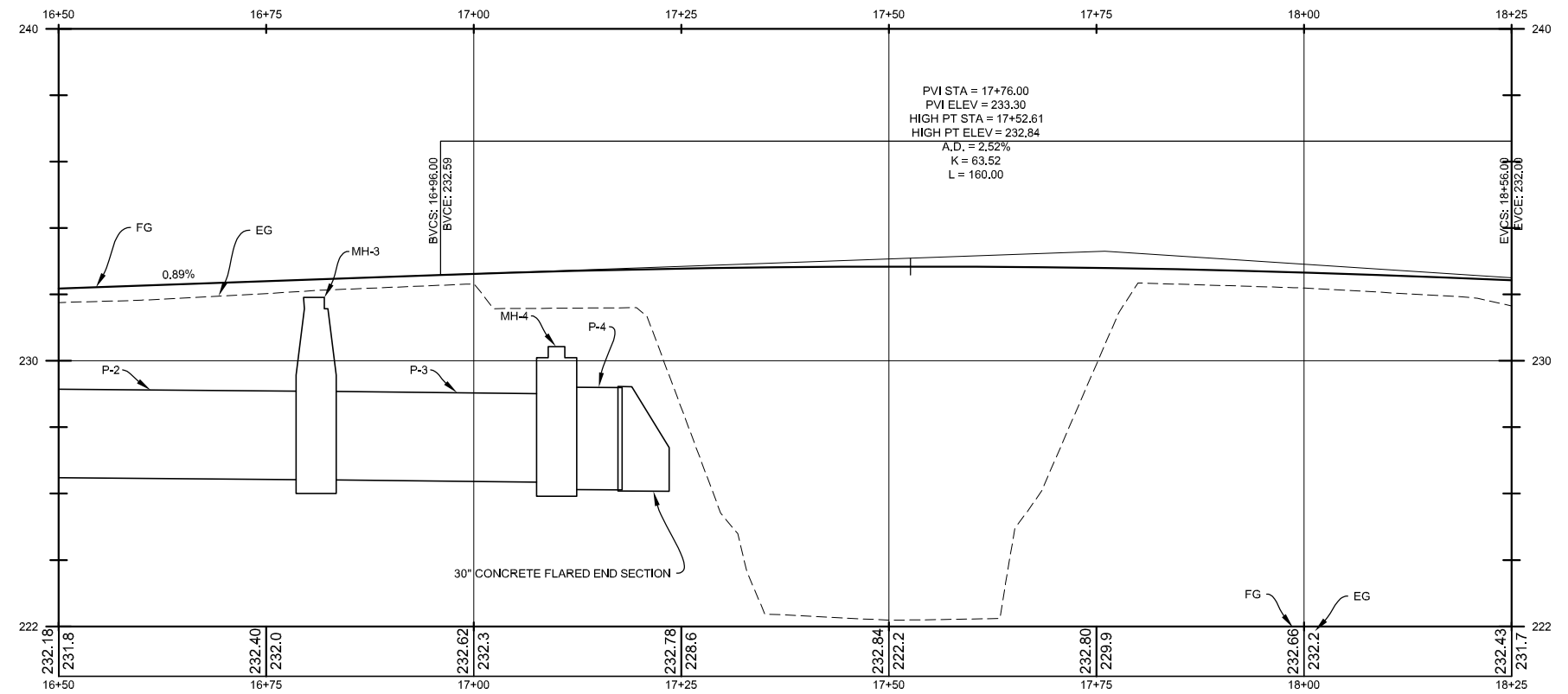
SHEET 6

RENEWS: December 31, 2026



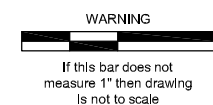
- ① INSTALL 48" CONCRETE CONCENTRIC MANHOLE AT STA: 16+81 LT PER COA DWGS 401 AND 407
- ② INSTALL 48" CONCRETE SHALLOW MANHOLE AT STA: 17+15 LT PER COA DWGS 402 AND 407
- ③ INSTALL 30" PVC C900 PIPE PER DWG RD339, RD345
- ④ INSTALL 30" PVC C900 PIPE PER DWG RD339, RD345
- ⑤ INSTALL 30" CONCRETE PIPE PER DWG RD339, RD345
- ⑥ INSTALL 30" CONCRETE FLARED END SECTION, SEE DETAIL ON SHEET 13
- ⑦ INSTALL RIPRAP OUTFALL, SEE DETAIL ON SHEET 13

STA: 16+50 to STA: 18+25



- GENERAL NOTES:**
- 1) SEE SHEET 11 FOR STORM DRAINAGE TABLES
  - 2) EROSION CONTROL MEASURES FOR EXISTING FACILITIES ARE ONLY REQUIRED IF EXCAVATION ACTIVITIES ARE TAKING PLACE ADJACENT TO THE EXISTING FACILITY PRIOR TO THE FACILITY BEING REMOVED.
  - 3) SEE SHEET 11 AND 12 FOR SWALE STORM DRAINAGE DETAILS

Note:  
Elevations are based on  
NAVD88 (M.S.L. = 0.00)



**LINN COUNTY ROAD DEPARTMENT**  
3010 FERRY STREET SW  
ALBANY, OREGON 97322  
PHONE: (541) 967-3919  
FAX: (541) 924-0202  
E-MAIL: Roads@co.linn.or.us

**COUNTY COMMISSION**  
ROGER NYQUIST  
CHAIRMAN  
WILLIAM TUCKER  
SHERRIE SPRENGER

**ROADMASTER**  
WAYNE MINK, P.E.  
**COUNTY ENGINEER**  
DAINEAL MALONE, P.E.

DATE:	REVISION:	BY:	BRIDGE NO:	DATE:
1/28/25	△ STORM DRAIN OUTFALL RELOCATED	SSM	0328-0036	1/15/2025
			PROJECT NO: CB2101	
			TRS: T. 11 S., R. 03 W., SEC. 10	
			DESIGNED BY: D. Malone	CHECKED BY: D. Malone
			DRAFTED BY: S. MacLean	REVIEWED BY: K. Groom

**GOLDFISH FARM ROAD**  
**COX CREEK BRIDGE**

LINN COUNTY

**STORM DRAIN**  
**PLAN & PROFILE**  
STA:16+50 to STA:18+25

SCALE: H 1" = 20'  
V 1" = 5'

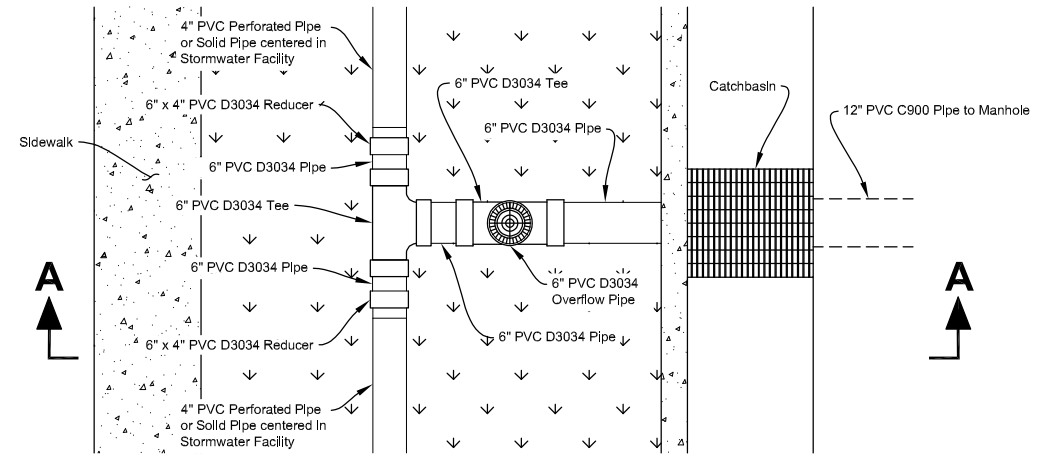
SHEET 9

RENEWS: December 31, 2026

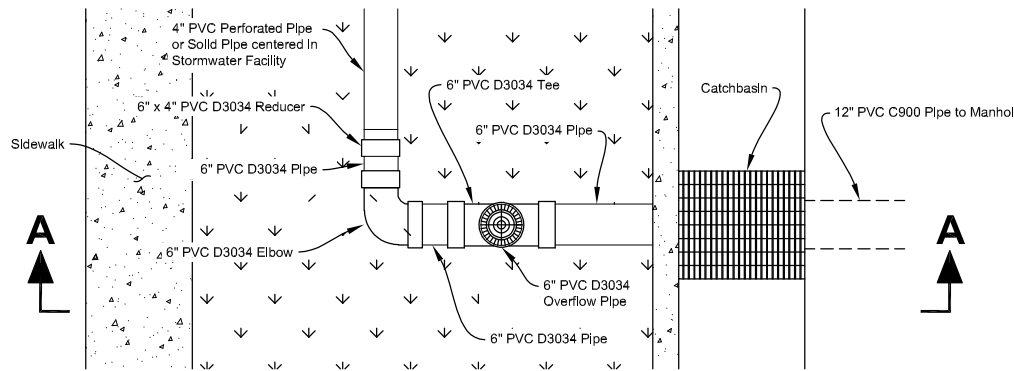
STORM DRAIN MANHOLE TABLE	
NAME	DETAILS
MH-1	48" SHALLOW MANHOLE STA: 14+55.00, 10.05 L RIM ELEV = 231.25 PL-11, 12" IE IN (W) = 228.89 P-1, 30" IE OUT (N) = 226.95
MH-2	48" SHALLOW MANHOLE STA: 15+61.00, 10.01 L RIM ELEV = 231.34 P-1, 30" IE IN (S) = 226.74 PL-4, 12" IE IN (E) = 226.74 PL-3, 12" IE IN (W) = 226.74 P-2, 30" IE OUT (N) = 226.74
MH-3	48" CONCENTRIC MANHOLE STA: 16+81.00, 10.05 L RIM ELEV = 231.91 P-2, 30" IE IN (S) = 226.50 P-3, 30" IE OUT (NW) = 226.50
MH-4	48" SHALLOW MANHOLE STA: 17+09.96, 30.44 L RIM ELEV = 230.43 P-3, 30" IE IN (SE) = 226.42 P-4, 30" IE OUT (N) = 226.42
MH-5	48" CONCENTRIC MANHOLE STA: 20+50.13, 15.18 R RIM ELEV = 230.12 PL-5, 12" IE IN (W) = 225.75 PL-6, 12" IE IN (E) = 226.26 P-5, 12" IE OUT (N) = 224.16

STORM DRAIN BASIN TABLE	
NAME	DETAILS
CB-1	STA: 15+60.99, 19.15 L RIM ELEV = 229.76, SUMP = 1' POF-1, 6" IE IN (W) = 226.76 PL-3, 12" IE OUT (E) = 226.76
CB-2	STA: 15+61.01, 19.28 R RIM ELEV = 229.30, SUMP = 1' POF-2, 6" IE IN (E) = 228.46 PL-4, 12" IE OUT (W) = 226.80
CB-3	STA: 20+35.21, 22.50 L RIM ELEV = 230.27, SUMP = 1' POF-3, 6" IE IN (W) = 226.96 PL-5, 12" IE OUT (E) = 225.96
CB-4	STA: 20+50.19, 22.50 R RIM ELEV = 227.96, SUMP = 1' POF-4, 6" IE IN (E) = 228.94 PL-6, 12" IE OUT (W) = 226.27
FL-1	STA: 14+55.00, 15.00 L RIM ELEV = 230.54, SUMP = 0' PL-11, 12" IE OUT (E) = 228.90

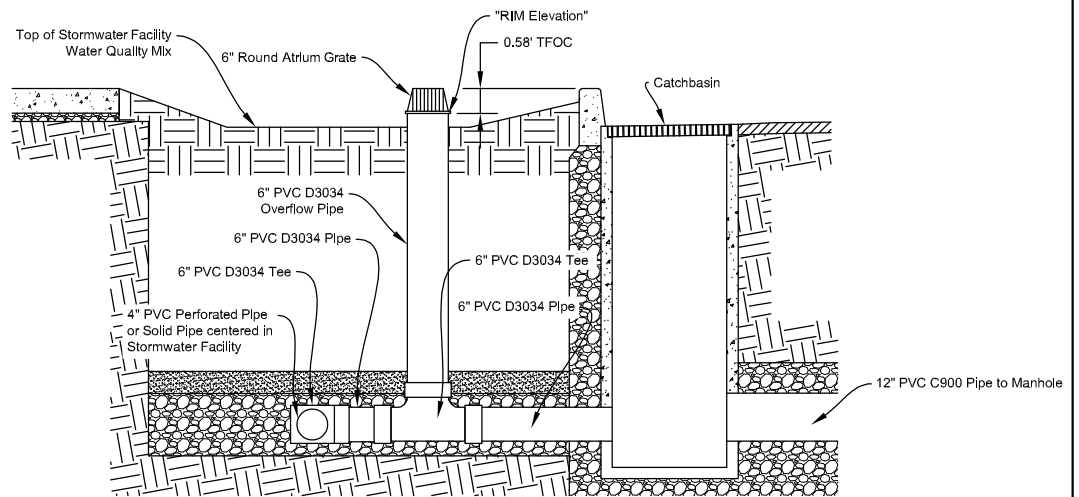
STORM DRAIN PIPE TABLE								
PIPE NO.	SIZE and TYPE	SLOPE	LENGTH (FT)	IE IN STATION and OFFSET	IE IN (FT)	IE OUT STATION and OFFSET	IE OUT (FT)	IE OUT (FT)
P-1	30" PVC C900 PIPE	0.20%	106.02	14+55.00, 10.05 L	226.95	15+61.00, 10.01 L	226.74	226.74
P-2	30" PVC C900 PIPE	0.20%	120.00	15+61.00, 10.01 L	226.74	16+81.00, 10.05 L	226.50	226.50
P-3	30" PVC C900 PIPE	0.23%	35.42	16+81.00, 10.05 L	226.50	17+09.96, 30.44 L	226.42	226.42
P-4	30" CONCRETE PIPE	0.20%	8.00	17+09.96, 30.44 L	226.42	17+17.87, 31.66 L	226.40	226.40
P-5	12" PVC C900 PIPE	0.19%	82.62	20+50.13, 15.18 R	224.16	21+32.70, 14.57 R	224.00	224.00
PL-3	12" PVC C900 PIPE	0.22%	9.14	15+60.99, 19.15 L	226.76	15+61.00, 10.01 L	226.74	226.74
PL-4	12" PVC C900 PIPE	0.20%	29.29	15+61.01, 19.28 R	226.80	15+61.00, 10.01 L	226.74	226.74
PL-5	12" PVC C900 PIPE	0.52%	40.52	20+35.21, 22.50 L	225.96	20+50.13, 15.18 R	225.75	225.75
PL-6	12" PVC C900 PIPE	0.14%	7.32	20+50.19, 22.50 R	226.27	20+50.13, 15.18 R	226.26	226.26
PL-11	12" PVC C900 PIPE	0.20%	4.95	14+55.00, 15.00 L	228.90	14+55.00, 10.05 L	228.89	228.89



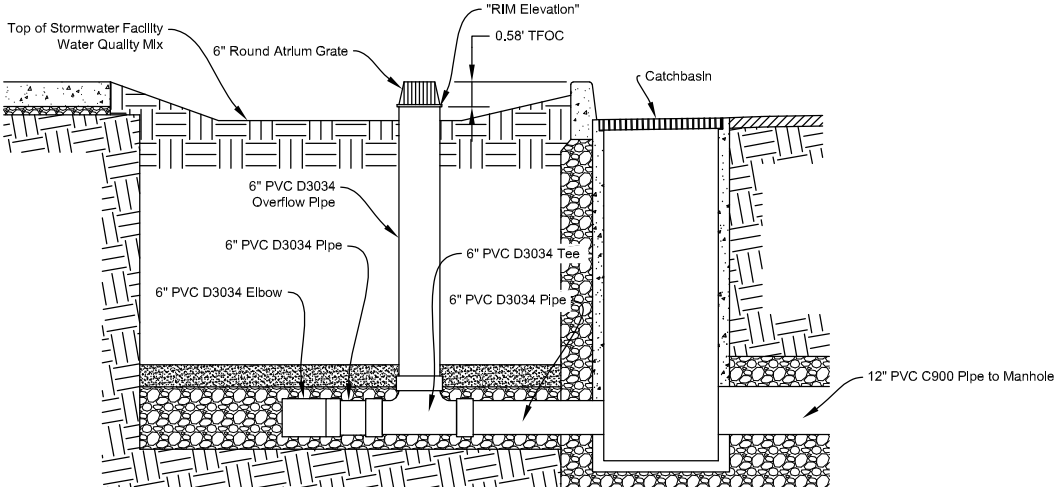
STORMWATER FACILITY PIPE w/ TEE PLAN VIEW



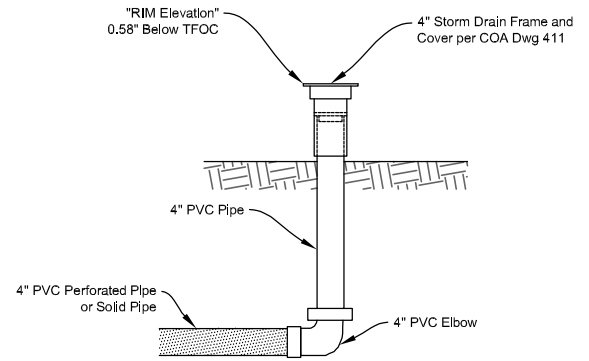
STORMWATER FACILITY PIPE w/ ELBOW PLAN VIEW



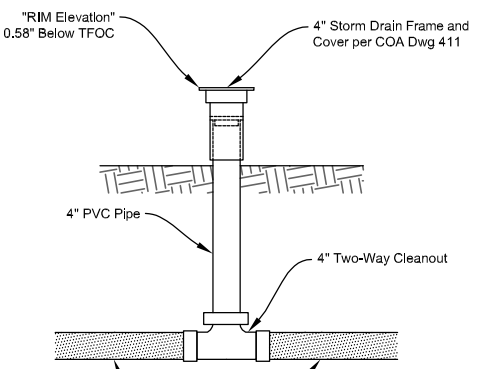
SECTION A-A



SECTION A-A



STORM WATER FACILITY CLEANOUT



STORM WATER FACILITY TWO-WAY CLEANOUT

GENERAL NOTES:  
1) SEE STORMWATER FACILITY PIPE STRUCTURE TABLE SHEET FOR ELEVATIONS AND DETAILS



**LINN COUNTY ROAD DEPARTMENT**  
3010 FERRY STREET SW  
ALBANY, OREGON 97322  
PHONE: (541) 967-3919  
FAX: (541) 924-0202  
E-MAIL: Roads@co.linn.or.us

**COUNTY COMMISSION**  
ROGER NYQUIST  
CHAIRMAN  
WILLIAM TUCKER  
SHERRIE SPRENGER

**ROADMASTER**  
WAYNE MINK, P.E.  
**COUNTY ENGINEER**  
DAINEAL MALONE, P.E.

DATE:	REVISION:	BY:	BRIDGE NO:	DATE:
1/28/25	STORM DRAIN OUTFALL RELOCATED	SSM	0328-0036	1/15/2025

PROJECT NO:	CB2101
TRIS:	T. 11 S., R. 03 W., SEC. 10
DESIGNED BY:	D. Malone
CHECKED BY:	D. Malone
DRAFTED BY:	S. MacLean
REVIEWED BY:	K. Groom

GOLDFISH FARM ROAD  
COX CREEK BRIDGE

LINN COUNTY

STORM DRAIN  
PIPE AND STRUCTURE TABLES  
AND STORMWATER FACILITY  
DETAILS

SCALE: no scale

SHEET 11

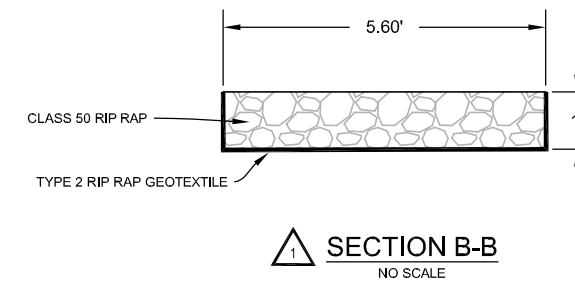
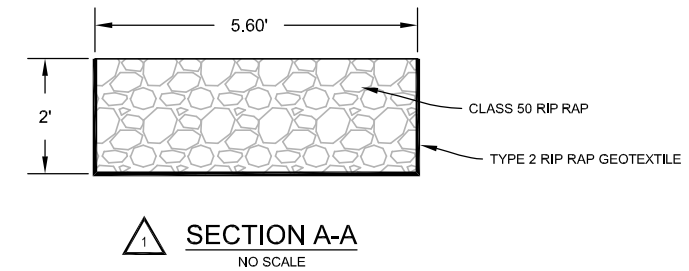
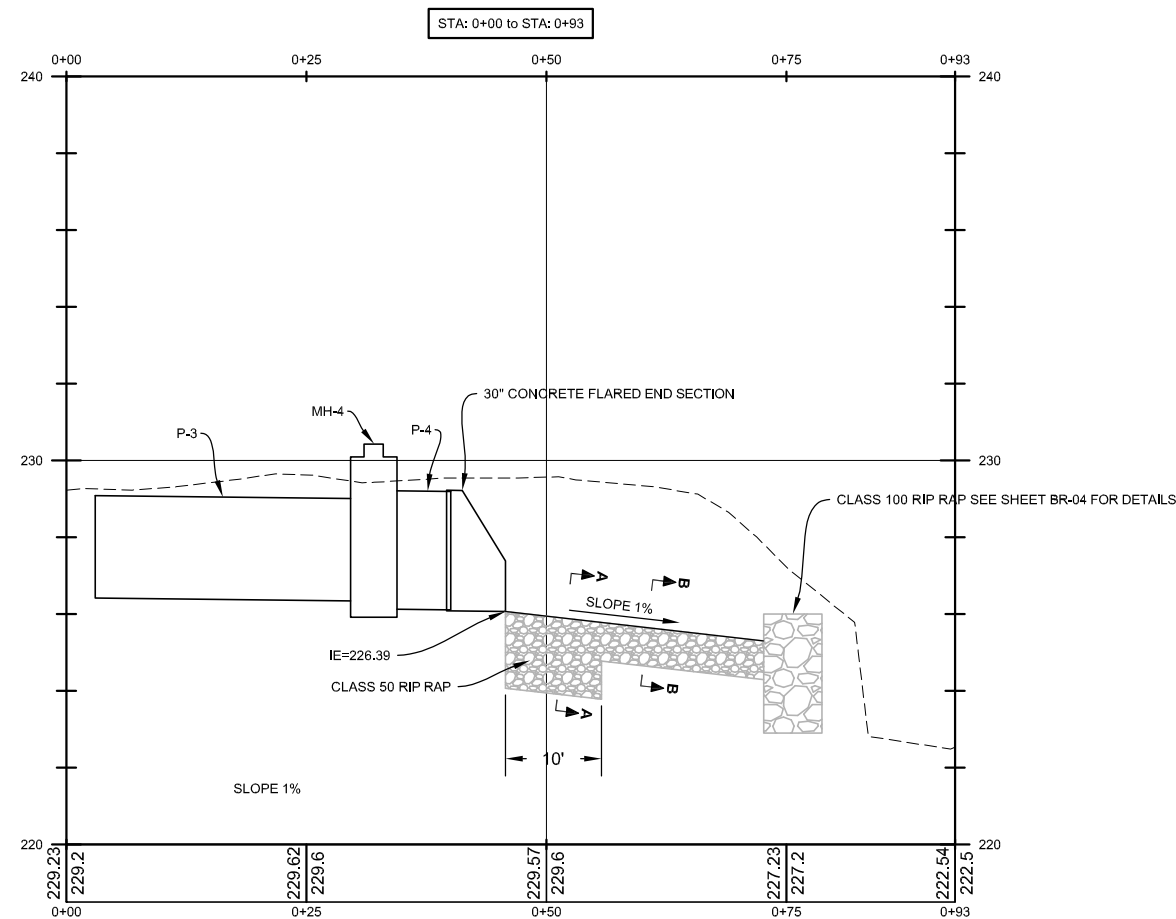
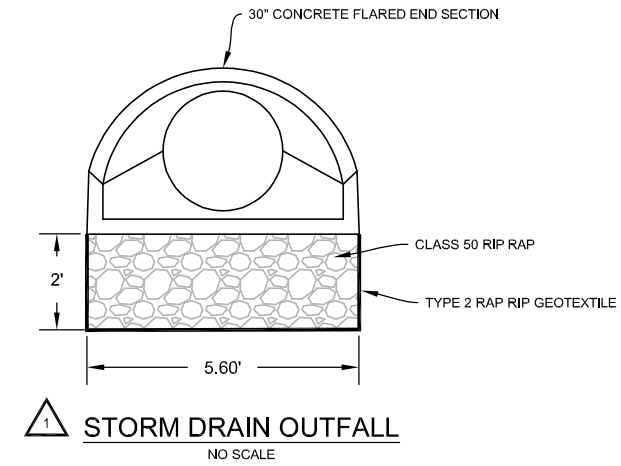
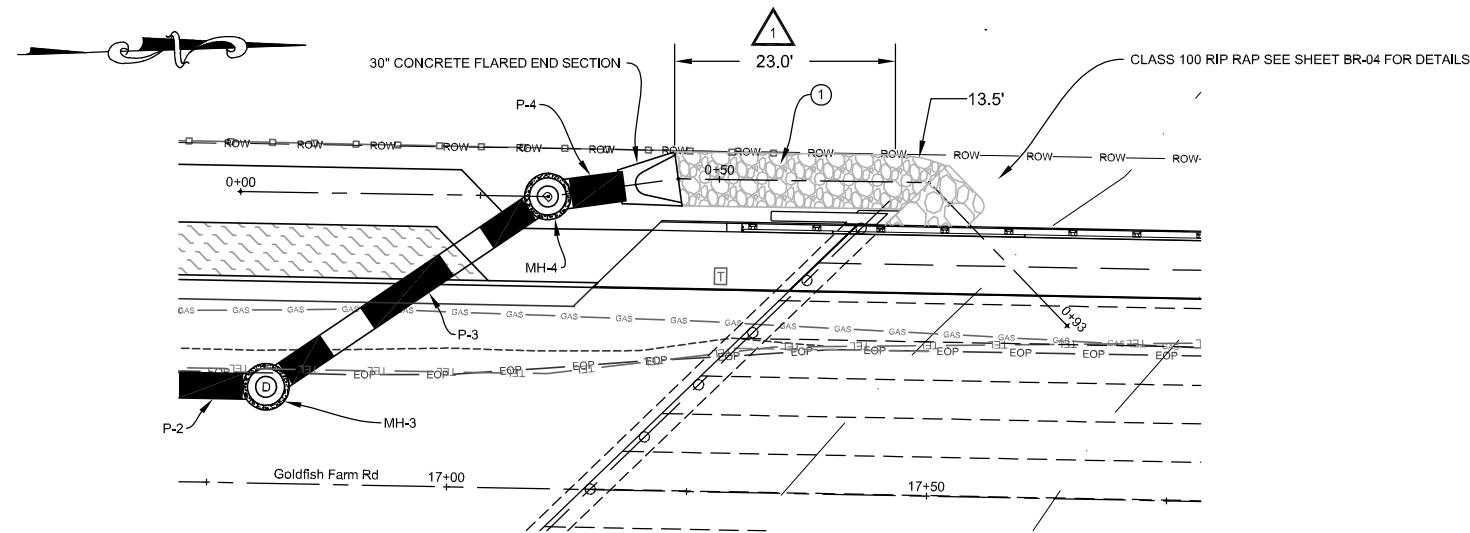
REGISTERED PROFESSIONAL  
ENGINEER  
76365

Digitally signed by Daineal Malone  
Date: 2025.01.28 16:30:50-08'00'

OREGON  
May 23, 2013  
DAINEAL LEAH MALONE

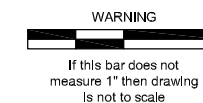
RENEWS; December 31, 2026

① INSTALL STORM DRAIN OUTFALL RIP RAP PER RD317 AND DETAILS THIS SHEET



**NOTE:**  
1) SEE SHEET 11 FOR STORM DRAIN TABLES

**Note:**  
Elevations are based on  
NAVD88 (M.S.L. = 0.00)



**LINN COUNTY ROAD DEPARTMENT**  
3010 FERRY STREET SW  
ALBANY, OREGON 97322  
PHONE: (541) 967-3919  
FAX: (541) 924-0202  
E-MAIL: Roads@co.linn.or.us

**COUNTY COMMISSION**  
ROGER NYQUIST  
CHAIRMAN  
WILLIAM TUCKER  
SHERRIE SPRENGER

**ROADMASTER**  
WAYNE MINK, P.E.  
**COUNTY ENGINEER**  
DAINEAL MALONE, P.E.

DATE:	REVISION:	BY:	BRIDGE NO:	DATE:
1/28/25	① STORM DRAIN OUTFALL RELOCATED	SSM	0328-0036	1/15/2025
			PROJECT NO: CB2101	
			TRS: T. 11 S., R. 03 W., SEC. 10	
			DESIGNED BY: D. Malone	CHECKED BY: D. Malone
			DRAFTED BY: S. MacLean	REVIEWED BY: K. Groom

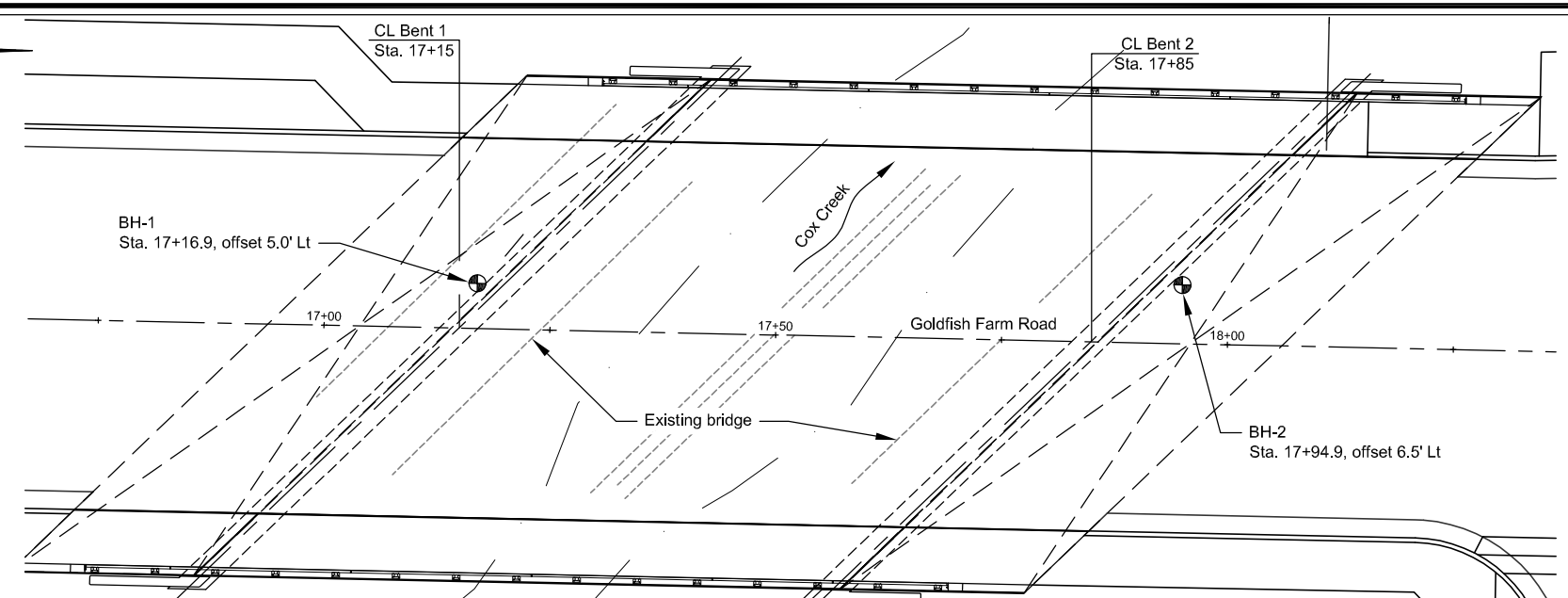
**GOLDFISH FARM ROAD  
COX CREEK BRIDGE**  
  
LINN COUNTY

**STORM DRAIN OUTFALL  
PLAN & PROFILE**  
STA: 0+00 to STA: 0+93  
  
SCALE: H 1" = 20'  
V 1" = 5'

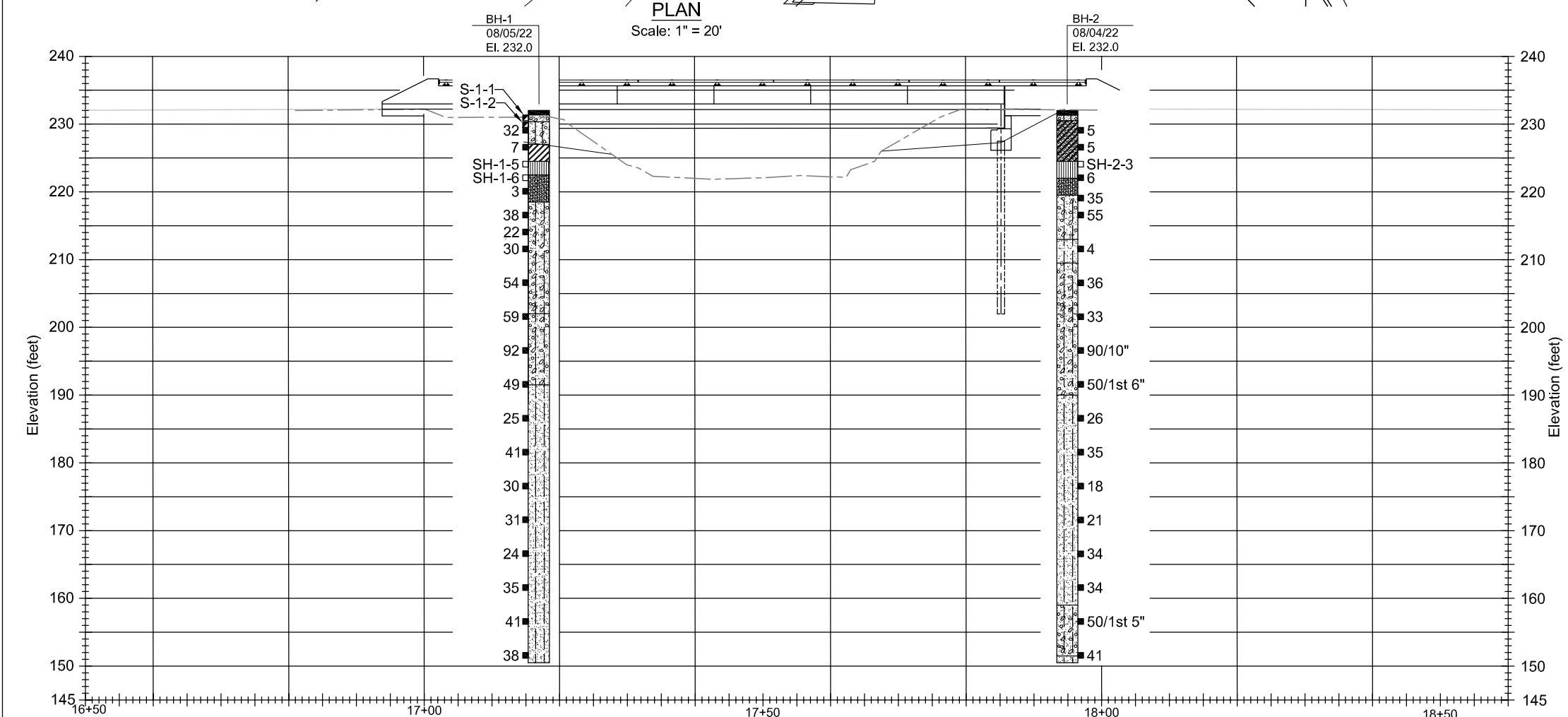
**REGISTERED PROFESSIONAL ENGINEER**  
76365  
Digitally signed by Daineal Malone  
Date: 2025.01.28 16:31:47-08'00'  
OREGON  
May 23, 2013  
DAINEAL LEAH MALONE  
**RENEWS: December 31, 2026**

1/28/2025 3:41 PM

X:\Projects - Current\BR 0328-0036 Cox Creek (Goldfish Farm Rd) Bridge\DWG-SSM\_Goldfish Farm Road - Cox Creek.dwg



PLAN  
Scale: 1" = 20'



PROFILE  
Scale: 1" = 20'

UNIT DESCRIPTIONS

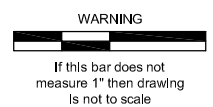
- ASPHALTIC CONCRETE
- SANDY GRAVEL, trace silt (GP); grey, damp, dense, fine to coarse sand, fine to coarse subangular to subrounded gravel, (base rock).
- Silty CRUSHED ROCK (GM); silty GRAVEL, some sand (GM), GRAVEL, some silt and sand (GP-GM), silty sandy GRAVEL (GM); grey, grey-brown, dark grey, and grey-brown and iron-stained, low plasticity silt, damp to wet, medium dense to very dense, fine to coarse sand, fine to coarse angular to rounded gravel and rock, (base rock, subbase/fill, or alluvium).
- CLAY (CH); grey, high plasticity, moist, medium stiff, (alluvium).
- CLAY, some sand (CH); grey-brown, high plasticity, moist, medium stiff, fine sand, (alluvium).
- SILT, some clay (ML); grey-brown and grey-brown and iron-stained, medium plasticity, moist to wet, very soft to stiff, (alluvium).
- Sandy SILT (ML); sandy SILT, scattered organics (ML); grey to grey-brown and iron-stained, low to medium plasticity, wet, soft to medium stiff, fine sand, (alluvium).
- Silty SAND (SM); silty SAND, scattered organics (SM); grey, grey-brown, and dark grey, non-plastic to low plasticity silt, moist to wet, loose to dense, fine sand, (alluvium).

LEGEND

- ◆ = Geotechnical Boring (BH)
- 24 ■ = Standard Penetration Test (SPT) N value
- 50#"/ or 87#"/ = SPT Test Refusal Length
- SH-3-2 □ = Shelby Tube Sample
- S-1-1 ■ = Grab Sample

General Notes:

1. Elevations are based on North American Vertical Datum 1988 (NAVD88, M.S.L. = 0.00).
2. Boring elevations were not surveyed. Boring locations, elevations, and stationing are approximate only.
3. Geotechnical data shown on this drawing are a consolidation of information from the geotechnical boring logs. More detailed subsurface data is available on the boring logs in the geotechnical report. The boring logs and geotechnical report are available upon request for review at the office of the Linn County Road Department. Contractor shall refer to the geotechnical report, boring logs, and information therein.
4. In accordance with ASTM D1586, N-values are reported for an interval of 1-foot except as noted.
5. SPT samples retained using a hammer efficiency of 85.5%.
6. Refer to ODOT Soil and Rock Classification and Logging - Chapter 5 of the 2023 GDM for a description of the terms used on this sheet.



**Foundation Engineering, Inc.**  
Professional Geotechnical Services

820 N.W. CORNELL AVENUE  
CORVALLIS, OREGON 97330  
BUS. (541) 757-7645



**LINN COUNTY ROAD DEPARTMENT**  
3010 FERRY STREET SW  
ALBANY, OREGON 97322  
PHONE: (541) 967-3919  
FAX: (541) 924-0202  
E-MAIL: Roads@co.linn.or.us

**COUNTY COMMISSION**  
ROGER NYQUIST  
CHAIRMAN  
WILLIAM TUCKER  
SHERRIE SPRENGER

**ROADMASTER**  
WAYNE E. MINK, P.E.  
**COUNTY ENGINEER**  
DAINEAL MALONE, P.E.

DATE:	REVISION:	BY:

BRIDGE NO: 0328-0036	DATE: 1/22/2025
PROJECT NO: CB2101	
TRS: T. 11 S., R. 03 W., SEC 10	
DESIGNED BY: W. Nickels	CHECKED BY: B. Running
DRAFTED BY: S. MacLean	REVIEWED BY: M. Mason

GOLDFISH FARM ROAD  
COX CREEK BRIDGE  
  
LINN COUNTY

FOUNDATION DATA SHEET  
  
SCALE: as shown SHEET BR-03

**Cox Creek: Goldfish Farm Road Bridge Replacement  
Bridge, Roadway and Utility**

**BID SCHEDULE**

Cox Creek: Goldfish Farm Road Bridge Replacement  
Bridge, Roadway and Utility

**Bid Opening:** February 18, 2025 at 9:35 a.m., P.D.T.

<b>SPEC</b>	<b>ITEM</b>	<b>UNIT</b>	<b>QUANT.</b>	<b>UNIT PRICE</b>	<b>TOTAL</b>
00210	1. Mobilization	LS	All	\$	\$
00221	2. Temporary Protection & Direction of Traffic	LS	All	\$	\$
00222	3. Temporary Signs	SQFT	260	\$	\$
00222	4. Portable Changeable Message Signs	EACH	2	\$	\$
00224	5. Temporary Barricade, Type III	EACH	2	\$	\$
00245	6. Temporary Water Management	LS	All	\$	\$
00280	7. Erosion Control	LS	All	\$	\$
00280	8. Inlet Protection, Type 3	EACH	1	\$	\$
00280	9. Inlet Protection, Type 7	EACH	4	\$	\$
00280	10. Inlet Protection, Type 11	EACH	19	\$	\$
00280	11. Sediment Barrier, Type 3	FOOT	1,035	\$	\$
00290	12. Pollution Control Plan	LS	All	\$	\$
00290	13. Work Containment Plan and System	LS	All	\$	\$
00305	14. Construction Survey Work	LS	All	\$	\$
00310	15. Asphalt Pavement Saw Cutting	FOOT	227	\$	\$
00310	16. Removal of Structures and Obstructions	LS	All	\$	\$
00320	17. Clearing and Grubbing	LS	All	\$	\$
00330	18. General Excavation	CUYD	2,993	\$	\$
00350	19. Rip Rap Geotextile, Type 1	SQYD	149	\$	\$
00350	20. Subgrade Geotextile	SQYD	2,410	\$	\$
00390	21. Loose Rip Rap, Class 50	CUYD	10	\$	\$
00390	22. Loose Rip Rap, Class 100	CUYD	124	\$	\$
00415	23. Mainline Video Inspection	FOOT	60	\$	\$
00445	24. 8 Inch PVC Sewer Pipe, 5 Ft Depth	FOOT	60	\$	\$
00445	25. 12 Inch PVC C900 Storm Pipe, 5 Ft Depth	FOOT	174	\$	\$
00445	26. 30 Inch PVC C900 Storm Pipe, 5 Ft Depth	FOOT	261	\$	\$
00445	27. 30 Inch Concrete Storm Pipe, 5 Ft Depth	FOOT	8	\$	\$
00445	28. 30 Inch Flared End Concrete Outfall	EACH	1	\$	\$
00470	29. Concrete Sanitary Sewer Manhole, Shallow	EACH	1	\$	\$



**Cox Creek: Goldfish Farm Road Bridge Replacement  
Bridge, Roadway and Utility**

<b>SPEC</b>	<b>ITEM</b>	<b>UNIT</b>	<b>QUANT.</b>	<b>UNIT PRICE</b>	<b>TOTAL</b>
00470	30. Concrete Storm Sewer Manhole	EACH	2	\$	\$
00470	31. Concrete Storm Sewer Manhole, Shallow	EACH	3	\$	\$
00470	32. Concrete Inlet, Type G-2	EACH	4	\$	\$
00470	33. Concrete Inlet, Field Inlet	EACH	1	\$	\$
00470	34. Flexible Mechanical Coupling, 12" x 15"	EACH	1	\$	\$
00501	35. Bridge Removal Work	LS	All	\$	\$
00510	36. Structure Excavation	LS	All	\$	\$
00510	37. Granular Structure Backfill	CUYD	40	\$	\$
00520	38. Furnish Pile Driving Equipment	LS	All	\$	\$
00520	39. Furnish PP12.75x0.375 Steel Piles	FOOT	572	\$	\$
00520	40. Drive PP12.75x0.375 Steel Piles	EACH	22	\$	\$
00520	41. Reinforced Pile Tips	EACH	22	\$	\$
00520	42. PP12.75x0.375 Steel Pile Splices	EACH	11	\$	\$
00530	43. Reinforcement, Grade 60	LS	All	\$	\$
00540	44. General Structural Concrete, Class 3300	LS	All	\$	\$
00545	45. Reinforced Concrete Bridge Approach Slabs	SQYD	256	\$	\$
00550	46. 33" Precast Prestressed Box Beam	FOOT	994	\$	\$
00585	47. Poured Joint Seal	LS	All	\$	\$
00587	48. Combination Bridge Rail	FOOT	223	\$	\$
00592	49. Rolled Waterproofing Membrane	SQFT	3,066	\$	\$
00641	50. Aggregate Base	TON	3,783	\$	\$
00744	51. Level 3, 1/2" ACP Mixture	TON	1,153	\$	\$
00759	52. Concrete Curbs, Curb and Gutter	FOOT	924	\$	\$
00759	53. Concrete Curbs, Standard Curb	FOOT	78	\$	\$
00759	54. Concrete Driveways, Residential	SQFT	502	\$	\$
00759	55. Concrete Driveways, Commercial	SQFT	536	\$	\$
00759	56. Concrete Valley Gutter	SQFT	199	\$	\$
00759	57. Concrete Walks	SQFT	4,621	\$	\$
00759	58. Extra for Curb Ramps	EACH	7	\$	\$
00759	59. Truncated Domes on New Surfaces	EACH	48	\$	\$
00865	60. Thermoplastic, Extruded or Sprayed Surface, Non-Profiled	FOOT	2,190	\$	\$
00865	61. Thermoplastic, Extruded or Sprayed, Surface, Profiled	FOOT	2,109	\$	\$

**Cox Creek: Goldfish Farm Road Bridge Replacement  
Bridge, Roadway and Utility**

SPEC	ITEM	UNIT	QUANT.	UNIT PRICE	TOTAL
00867	62. Pavement Legend, Type B: Arrows	EACH	2	\$	\$
00867	63. Pavement Legend, Type B-HS: Bicycle Lane Stencil	EACH	3	\$	\$
00867	64. Pavement Bar, Type B	SQFT	13	\$	\$
00867	65. Pavement Bar, Type B-HS	SQFT	90	\$	\$
00905	66. Remove and Protect Existing Signs and Supports	EACH	5	\$	\$
00905	67. Reinstall Existing Signs	EACH	2	\$	\$
00930	68. Pipe Sign Supports	LS	All	\$	\$
00930	69. Perforated Steel Square Tube Support	LS	All	\$	\$
00940	70. Signs, Standard Sheeting, Sheet Aluminum	SQFT	50	\$	\$
01012	71. Roadside Shallow Swales	LS	All	\$	\$
01030	72. Permanent Seeding	ACRE	0.17	\$	\$
01040	73. Topsoil	CUYD	78	\$	\$
01040	74. Deciduous Trees, 2-1/2 Inch Caliper	EACH	20	\$	\$
01040	75. Shrubs, #1 Container	EACH	2,091	\$	\$
01040	76. Shrubs, #3 Container	EACH	92	\$	\$
01040	77. Groundcovers, #1 Container	EACH	616	\$	\$
01040	78. Wood Chip Mulch	CUYD	26	\$	\$
01070	79. Single Mailbox Support	EACH	4	\$	\$
01150	80. 2 Inch Combination Air Release / Air Vacuum Valve Assembly	EACH	1	\$	\$
01150	81. 2 Inch Water Service Line	FOOT	21	\$	\$
01150	82. 2 Inch Water Meter Assembly	EACH	1	\$	\$
<b>PROJECT TOTAL</b>				\$	

\_\_\_\_\_  
Company Name

\_\_\_\_\_  
Address

\_\_\_\_\_  
City State Zip Code