



Linn County Road Department

*Providing safe and efficient transportation to
citizens and visitors of Linn County.*

February 13, 2025

ADDENDUM NO. 3

TO: All Plan Holders and/or Prospective Bidders

RE: Cox Creek, Goldfish Farm Road Bridge Replacement
Bid Opening, February 18, 2025, 9:35 PDT, Linn County Courthouse

FROM: Daineal Malone, P.E., County Engineer *DM*

The following changes are hereby made to the Cox Creek, Goldfish Farm Road Bridge Replacement Project Bidding Documents:

SPECIAL PROVISIONS

00415 VIDEO PIPE INSEPTION – Replace this Section, except for the section number and title, with the following:

Comply with the City of Albany Standard Construction Specification Division 4 – Sewer.

00445 SANITARY, STORM, CULVERT, SIPHON AND IRRIGATION PIPE – Replace the paragraph that begins “Comply with Section...”, with the following two paragraphs:

For sanitary pipe, comply with the City of Albany Standard Construction Specification Division 4 – Sewer.

For all other pipe, comply with Section 00445 of the Standard Specifications modified as follows:

00470 MANHOLES, CATCH BASINS AND INLETS – Replace the paragraph that begins “Comply with Section...”, with the following two paragraphs:

For sanitary sewer structures, comply with the City of Albany Standard Construction Specification Division 4 – Sewer.

For all other structures, comply with Section 00470 of the Standard Specifications modified as follows:

00490.90 Payment – Replace pay item (j) with the following pay item:

(j) Flexible Mechanical Coupling, 15” x 15”Each

01140 POTABLE WATER PIPE AND FITTING – Replace this Section, except for the section number and title, with the following:

Comply with the City of Albany Standard Construction Specification Division 5 – Water.

01150 POTABLE WATER VALVES – Replace this Section, except for the section number and title, with the following:

Comply with the City of Albany Standard Construction Specification Division 5 – Water.

Add the following Section:

01160 FIRE HYDRANTS AND APPURTENANCES – Comply with the City of Albany Standard Construction Specification Division 5 – Water.

01170 POTABLE WATER SERVICE CONNECTIONS, 2 INCH AND SMALLER – Replace this Section, except for the section number and title, with the following:

Comply with the City of Albany Standard Construction Specification Division 5 – Water.

02415 PLASTIC PIPE – Replace the paragraph that begins “Comply with Section...”, with the following two paragraphs:

For sanitary sewer plastic pipe, comply with the City of Albany Standard Construction Specification Division 4 – Sewer.

For all other plastic pipe, comply with Section 002415 of the Standard Specifications.

PLANS

Sheet 6 – Note was added regarding the fire hydrant installation.

Sheet 8 – Sanitary sewer pipe type and elevation was modified.

Sheet 10 – Storm sewer pipe size was modified.

Sheet 11– Storm sewer pipe size was modified.

Revised Plan Sheets are included with this addendum.

BID SCHEDULE

Bid Item 24, 8 Inch PVC Sewer Pipe, 5 Ft Depth – Add “C900” after “PVC”.

Bid Item 25, 12 Inch PVC C900 Storm Pipe, 5 Ft Depth – Change the QUANT. from “174” to “91”.

Bid Item 34, Flexible Mechanical Coupling, 12” x 15” - Replace the Item title with “Flexible Mechanical Coupling, 15” x 15””.

Add the following bid item after Bid Item 82: Bid Item 83, Fire Hydrant Extensions, SPEC “01150”, UNIT “EACH” and QUANT. “1”.

Add the following bid item after Bid Item 83: Bid Item 84, 15 Inch PVC C900 Storm Pipe, 5 Ft Depth, SPEC “00445”, UNIT “FOOT” and QUANT. “83”.

A revised bid schedule is included with this addendum. The above edits have been included in the revised bid schedule.

These changes will be included in the Contract for this Project. It is understood that your bid will be submitted accordingly.

All Bidders will acknowledge receipt of this addendum by returning a signed copy of this addendum with the bid package. Proposals without this addendum may be rejected.

Company Name

Authorized Signature

Printed Authorized Name

Date of Signature

**Cox Creek: Goldfish Farm Road Bridge Replacement
Bridge, Roadway and Utility**

BID SCHEDULE

Cox Creek: Goldfish Farm Road Bridge Replacement
Bridge, Roadway and Utility

Bid Opening: February 18, 2025 at 9:35 a.m., P.D.T.

SPEC	ITEM	UNIT	QUANT.	UNIT PRICE	TOTAL
00210	1. Mobilization	LS	All	\$	\$
00221	2. Temporary Protection & Direction of Traffic	LS	All	\$	\$
00222	3. Temporary Signs	SQFT	260	\$	\$
00222	4. Portable Changeable Message Signs	EACH	2	\$	\$
00224	5. Temporary Barricade, Type III	EACH	2	\$	\$
00245	6. Temporary Water Management	LS	All	\$	\$
00280	7. Erosion Control	LS	All	\$	\$
00280	8. Inlet Protection, Type 3	EACH	1	\$	\$
00280	9. Inlet Protection, Type 7	EACH	4	\$	\$
00280	10. Inlet Protection, Type 11	EACH	19	\$	\$
00280	11. Sediment Barrier, Type 3	FOOT	1,035	\$	\$
00290	12. Pollution Control Plan	LS	All	\$	\$
00290	13. Work Containment Plan and System	LS	All	\$	\$
00305	14. Construction Survey Work	LS	All	\$	\$
00310	15. Asphalt Pavement Saw Cutting	FOOT	227	\$	\$
00310	16. Removal of Structures and Obstructions	LS	All	\$	\$
00320	17. Clearing and Grubbing	LS	All	\$	\$
00330	18. General Excavation	CUYD	2,993	\$	\$
00350	19. Rip Rap Geotextile, Type 1	SQYD	149	\$	\$
00350	20. Subgrade Geotextile	SQYD	2,410	\$	\$
00390	21. Loose Rip Rap, Class 50	CUYD	10	\$	\$
00390	22. Loose Rip Rap, Class 100	CUYD	124	\$	\$
00415	23. Mainline Video Inspection	FOOT	60	\$	\$
00445	24. 8 Inch PVC C900 Sewer Pipe, 5 Ft Depth	FOOT	60	\$	\$
00445	25. 12 Inch PVC C900 Storm Pipe, 5 Ft Depth	FOOT	91	\$	\$
00445	26. 30 Inch PVC C900 Storm Pipe, 5 Ft Depth	FOOT	261	\$	\$
00445	27. 30 Inch Concrete Storm Pipe, 5 Ft Depth	FOOT	8	\$	\$
00445	28. 30 Inch Flared End Concrete Outfall	EACH	1	\$	\$
00470	29. Concrete Sanitary Sewer Manhole, Shallow	EACH	1	\$	\$

**Cox Creek: Goldfish Farm Road Bridge Replacement
Bridge, Roadway and Utility**

SPEC	ITEM	UNIT	QUANT.	UNIT PRICE	TOTAL
00470	30. Concrete Storm Sewer Manhole	EACH	2	\$	\$
00470	31. Concrete Storm Sewer Manhole, Shallow	EACH	3	\$	\$
00470	32. Concrete Inlet, Type G-2	EACH	4	\$	\$
00470	33. Concrete Inlet, Field Inlet	EACH	1	\$	\$
00470	34. Flexible Mechanical Coupling, 15" x 15"	EACH	1	\$	\$
00501	35. Bridge Removal Work	LS	All	\$	\$
00510	36. Structure Excavation	LS	All	\$	\$
00510	37. Granular Structure Backfill	CUYD	40	\$	\$
00520	38. Furnish Pile Driving Equipment	LS	All	\$	\$
00520	39. Furnish PP12.75x0.375 Steel Piles	FOOT	572	\$	\$
00520	40. Drive PP12.75x0.375 Steel Piles	EACH	22	\$	\$
00520	41. Reinforced Pile Tips	EACH	22	\$	\$
00520	42. PP12.75x0.375 Steel Pile Splices	EACH	11	\$	\$
00530	43. Reinforcement, Grade 60	LS	All	\$	\$
00540	44. General Structural Concrete, Class 3300	LS	All	\$	\$
00545	45. Reinforced Concrete Bridge Approach Slabs	SQYD	256	\$	\$
00550	46. 33" Precast Prestressed Box Beam	FOOT	994	\$	\$
00585	47. Poured Joint Seal	LS	All	\$	\$
00587	48. Combination Bridge Rail	FOOT	223	\$	\$
00592	49. Rolled Waterproofing Membrane	SQFT	3,066	\$	\$
00641	50. Aggregate Base	TON	3,783	\$	\$
00744	51. Level 3, 1/2" ACP Mixture	TON	1,153	\$	\$
00759	52. Concrete Curbs, Curb and Gutter	FOOT	924	\$	\$
00759	53. Concrete Curbs, Standard Curb	FOOT	78	\$	\$
00759	54. Concrete Driveways, Residential	SQFT	502	\$	\$
00759	55. Concrete Driveways, Commercial	SQFT	536	\$	\$
00759	56. Concrete Valley Gutter	SQFT	199	\$	\$
00759	57. Concrete Walks	SQFT	4,621	\$	\$
00759	58. Extra for Curb Ramps	EACH	7	\$	\$
00759	59. Truncated Domes on New Surfaces	EACH	48	\$	\$
00865	60. Thermoplastic, Extruded or Sprayed Surface, Non-Profiled	FOOT	2,190	\$	\$
00865	61. Thermoplastic, Extruded or Sprayed, Surface, Profiled	FOOT	2,109	\$	\$

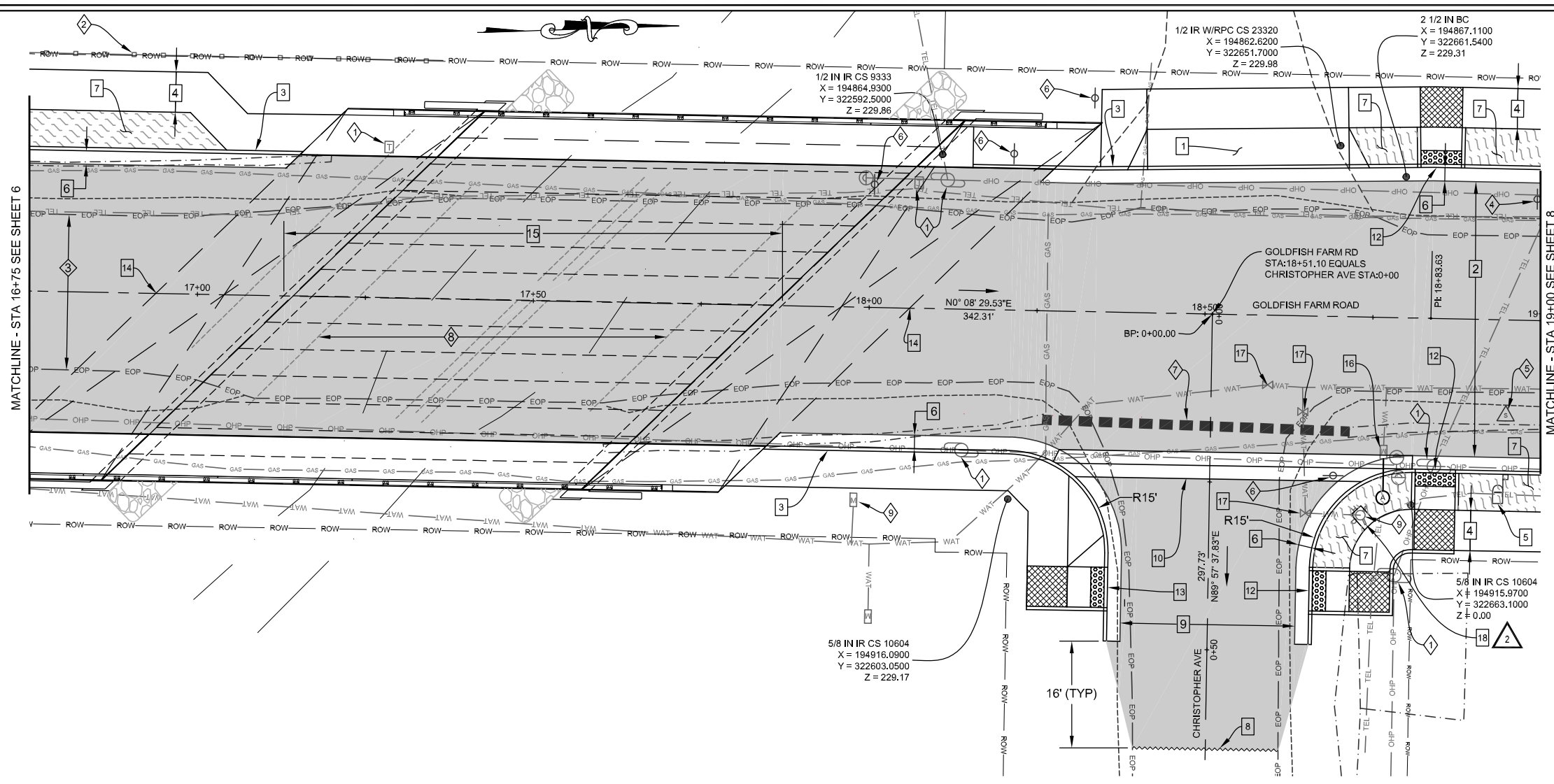
**Cox Creek: Goldfish Farm Road Bridge Replacement
 Bridge, Roadway and Utility**

SPEC	ITEM	UNIT	QUANT.	UNIT PRICE	TOTAL
00867	62. Pavement Legend, Type B: Arrows	EACH	2	\$	\$
00867	63. Pavement Legend, Type B-HS: Bicycle Lane Stencil	EACH	3	\$	\$
00867	64. Pavement Bar, Type B	SQFT	13	\$	\$
00867	65. Pavement Bar, Type B-HS	SQFT	90	\$	\$
00905	66. Remove and Protect Existing Signs and Supports	EACH	5	\$	\$
00905	67. Reinstall Existing Signs	EACH	2	\$	\$
00930	68. Pipe Sign Supports	LS	All	\$	\$
00930	69. Perforated Steel Square Tube Support	LS	All	\$	\$
00940	70. Signs, Standard Sheeting, Sheet Aluminum	SQFT	50	\$	\$
01012	71. Roadside Shallow Swales	LS	All	\$	\$
01030	72. Permanent Seeding	ACRE	0.17	\$	\$
01040	73. Topsoil	CUYD	78	\$	\$
01040	74. Deciduous Trees, 2-1/2 Inch Caliper	EACH	20	\$	\$
01040	75. Shrubs, #1 Container	EACH	2,091	\$	\$
01040	76. Shrubs, #3 Container	EACH	92	\$	\$
01040	77. Groundcovers, #1 Container	EACH	616	\$	\$
01040	78. Wood Chip Mulch	CUYD	26	\$	\$
01070	79. Single Mailbox Support	EACH	4	\$	\$
01150	80. 2 Inch Combination Air Release / Air Vacuum Valve Assembly	EACH	1	\$	\$
01150	81. 2 Inch Water Service Line	FOOT	21	\$	\$
01150	82. 2 Inch Water Meter Assembly	EACH	1	\$	\$
01150	83. Fire Hydrant Extensions	EACH	1	\$	\$
00445	84. 15 Inch PVC C900 Storm Pipe, 5 Ft Depth	FOOT	83	\$	\$
PROJECT TOTAL				\$	

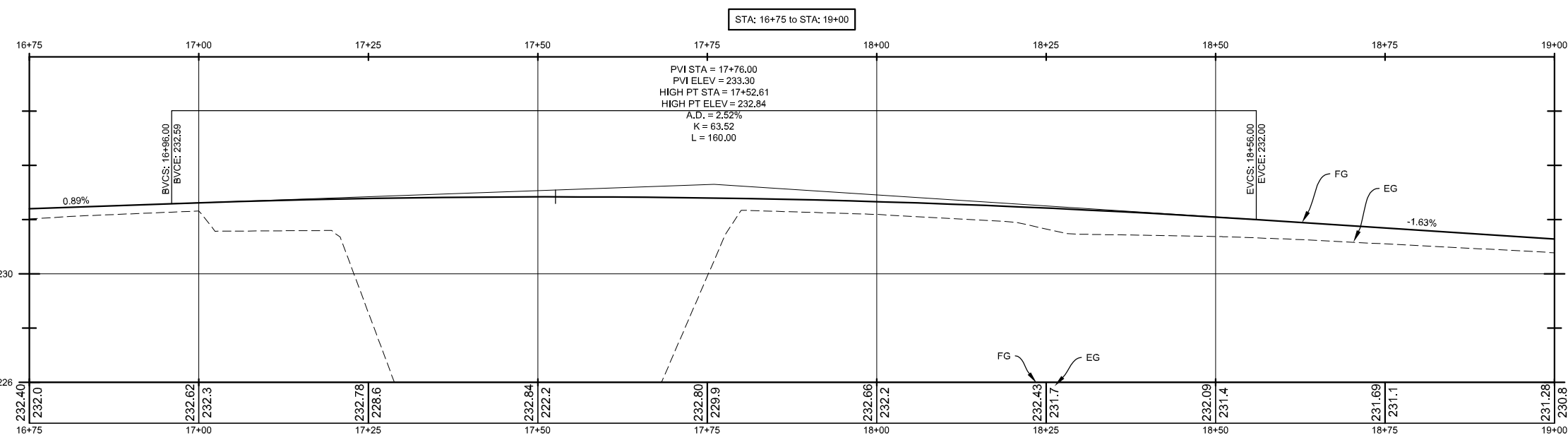
 Company Name

 Address

 City State Zip Code

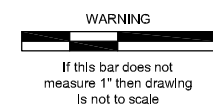


- 1 EXISTING UTILITY TO BE RELOCATED BY OTHERS
 - 2 RETAIN AND PROTECT EXISTING FENCE FROM STA:16+46 TO STA: 17+36 LT
 - 3 REMOVE EXISTING ASPHALT FROM EOP TO EOP STA: 14+65 TO STA: 21+34
 - 4 REMOVE EXISTING SIGN AT STA: 18+99 LT
 - 5 REMOVE AND PROTECT EXISTING MAILBOX AT STA: 18+95 RT
 - 6 REMOVE AND RETAIN EXISTING SIGNS AT STA: 18+21 LT, STA: 18+33 LT AND STA: 18+69 RT
 - 7 REMOVE EXISTING STORM PIPE FROM STA: 18+26 TO STA: 18+72 RT
 - 8 REMOVE EXISTING BRIDGE
 - 9 RETAIN AND PROTECT EXISTING UTILITY
-
- 1 INSTALL COMMERCIAL DRIVEWAY AT ACCESS CENTERLINE STA: 18+55.89 LT, W= 30' PER COA DWG 308
 - 2 CONSTRUCT ROADWAY SECTION FROM STA: 15+06 TO SOUTH BRIDGE APPROACH PANEL AT APPROX. STA: 16+93.96 AND FROM NORTH BRIDGE APPROACH PANEL AT APPROX. STA: 18+05.98 TO STA:21+34. SEE SHEET 4 FOR TYPICAL SECTIONS
 - 3 INSTALL CURBSIDE SIDEWALK FROM STA: 17+03.94 TO STA: 17+15.46 LT, STA: 18+15.05 TO STA: 18+38.07 LT AND STA: 17+84.48 TO STA: 18+30.22 RT
 - 4 INSTALL 6' WIDE SETBACK SIDEWALK FROM STA: 16+35.87 TO STA: 17+03.94 LT, STA: 18+34.05 TO STA: 20+43.06 LT AND STA: 18+72.25 TO STA: 21+26.48 RT. PER COA DWG 313
 - 5 INSTALL MAILBOX ON SINGLE MAILBOX SUPPORT PER COA DWG 202A AT STA: 18+94 RT WITHIN THE LANDSCAPE STRIP. INSTALL TEMPORARY MAILBOX POST TO ALLOW MAIL SERVICE TO CONTINUE DURING CONSTRUCTION
 - 6 INSTALL 30" CURB AND GUTTER FROM STA: 15+05.61 TO STA: 17+15.46 LT, STA: 17+84.48 TO 18+38.27 RT, STA: 18+24.98 TO STA: 20+49.99 LT AND STA: 18+64.27 TO STA: 21+29.51 RT. PER COA DWG 304
 - 7 INSTALL 5.5' LANDSCAPE STRIP FROM STA: 16+35 TO STA: 17+03 LT, STA: 18+66.75 TO STA: 18+81.22 RT, STA: 18+70.88 TO STA: 18+81.25 LT, STA: 18+88.25 TO STA: 19+29.03 LT AND STA: 18+88.25 TO STA: 19+66 RT. SEE SHEET LS-01 FOR DETAILS
 - 8 SAWCUT AND REMOVE EXISTING ASPHALT FROM EDGE OF PAVEMENT TO EDGE OF PAVEMENT AT CHRISTOPHER AVE STA: 0+65
 - 9 CONSTRUCT ROADWAY SECTION FROM CHRISTOPHER AVE STA: 0+20.56 TO STA: 0+49.06. SEE SHEET 4 FOR TYPICAL SECTIONS
 - 10 CONSTRUCT VALLEY GUTTER FROM STA: 18+28.47 TO STA: 18+81.30 RT PER COA DWG 305
 - 11 RELOCATE FENCE STA: 17+06 TO 17+36 LT
 - 12 INSTALL PERPENDICULAR CURB RAMP OPTION "PR-1" AT RAMP CENTERLINE STA: 18+36.26 RT, STA: 18+66.26 RT AND STA: 18+84.75 LT/RT PER RD902, RD904, RD912, DET1752 AND DETAILS SHEET CR-02
 - 13 INSTALL PERPENDICULAR CURB RAMP WITH SINGLE FLARE AT RAMP CENTERLINE STA: 18+36.26 RT PER RD902, RD904, RD910 AND DETAILS SHEET CR-02
 - 14 TRANSITION 1% CROSS SLOPE ON BRIDGE TO 2% AT BRIDGE APPROACHES
 - 15 CONSTRUCT BRIDGE AS SHOWN ON SHEETS BR-01 TO BR-09
 - 16 REPLACE EXISTING VALVE WITH NEW COMBINATION AIR / VACUUM RELEASE VALVE IN NEW PLANTER STRIP PER COA DWG 509
 - 17 ADJUST EXISTING UTILITY BOX AT STA: 18+59 RT, 18+64 RT AND 18+65 RT
 - 18 ADJUST EXISTING FIRE HYDRANT PER COA DWG 504



- GENERAL NOTES:**
- 1) RETAIN AND PROTECT EXISTING UTILITIES (FIELD VERIFY LOCATIONS)
 - 2) PERMANENTLY SEED ANY SOIL AREAS DISTURBED DURING CONSTRUCTION
 - 3) SEE SHEET 4 FOR TYPICAL SECTIONS
 - 4) SEE SHEET 15 FOR CURB RAMP DETAILS
 - 5) SEE SHEET 11 FOR STORM DRAIN TABLES AND DETAILS
 - 6) SEE SHEETS LS-01 AND LS-02 FOR PLANTING PLAN AND DETAILS

Note:
Elevations are based on NAVD88 (M.S.L. = 0.00)



LINN COUNTY ROAD DEPARTMENT
3010 FERRY STREET SW
ALBANY, OREGON 97322
PHONE: (541) 967-3919
FAX: (541) 924-0202
E-MAIL: Roads@co.linn.or.us

COUNTY COMMISSION
ROGER NYQUIST
CHAIRMAN
WILLIAM TUCKER
SHERRIE SPRENGER

ROADMASTER
WAYNE MINK, P.E.
COUNTY ENGINEER
DAINEAL MALONE, P.E.

DATE:	REVISION:	BY:	BRIDGE NO:	DATE:
1/28/25	NO FENCE TO BE RELOCATED	SSM	0328-0036	1/15/2025
2/13/25	ADDED FIRE HYDRANT NOTE	SSM	PROJECT NO: CB2101	
			TRS: T, 11 S., R, 03 W., SEC. 10	
			DESIGNED BY: D. Malone	CHECKED BY: D. Malone
			DRAFTED BY: S. MacLean	REVIEWED BY: K. Groom

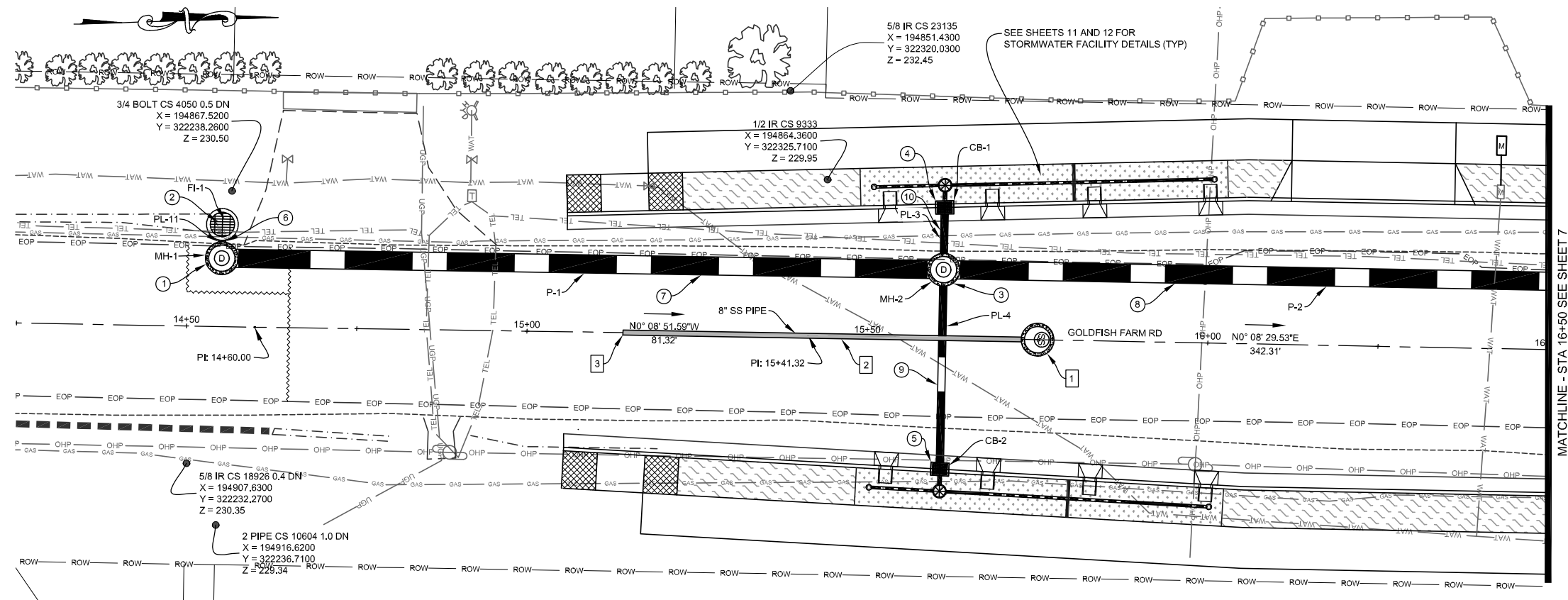
**GOLDFISH FARM ROAD
COX CREEK BRIDGE**

LINN COUNTY

PLAN & PROFILE
STA:16+75 to STA:19+00

SCALE: H 1" = 20'
V 1" = 5'

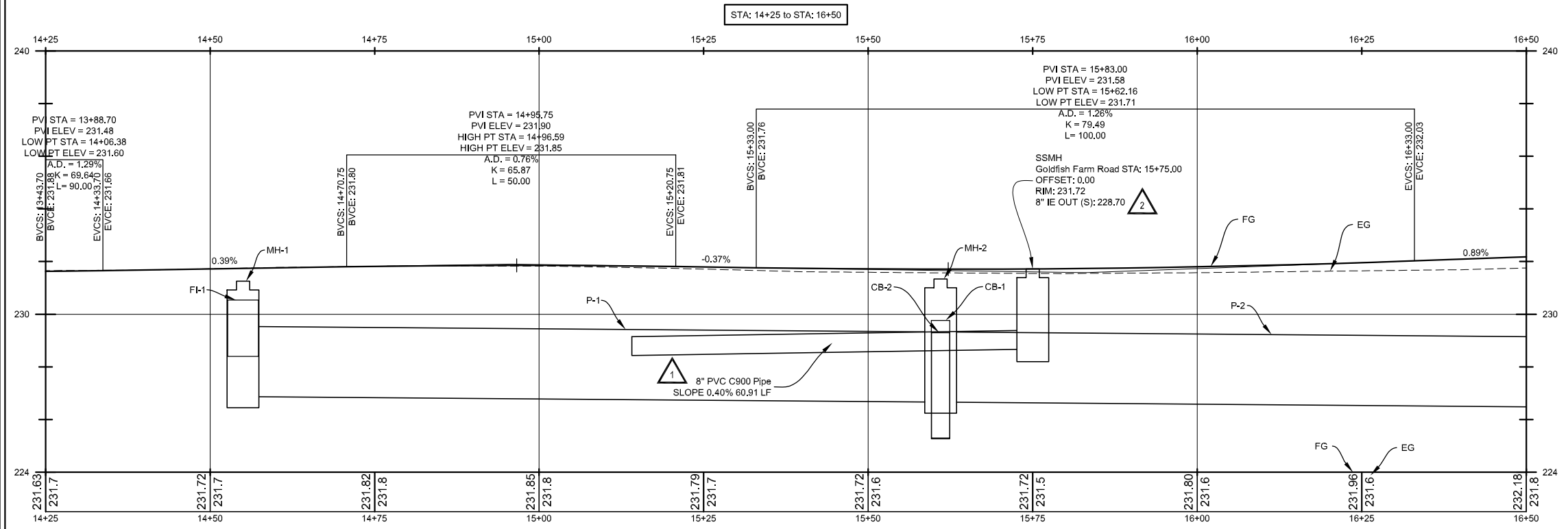
SHEET 6



MATCHLINE - STA 16+50 SEE SHEET 7

- ① INSTALL 48" CONCRETE SHALLOW MANHOLE AT STA: 14+55 LT PER COA DWGS 402 AND 407
- ② INSTALL CONCRETE FIELD INLET AT STA: 14+55 LT PER DWG RD345, RD374. NO CONCRETE APRON REQUIRED
- ③ INSTALL 48" CONCRETE SHALLOW MANHOLE AT STA: 15+61 LT PER COA DWGS 402 AND 407
- ④ INSTALL CONCRETE INLET, TYPE G-2 WITH TYPE 2 GRATE AT STA: 15+61 LT PER COA DWG 414, RD339, RD365, RD366
- ⑤ INSTALL CONCRETE INLET, TYPE G-2 WITH TYPE 2 GRATE AT STA: 15+61 RT PER COA DWG 414, RD339, RD365, RD366
- ⑥ INSTALL 12" PVC C900 PIPE PER DWG RD339, RD345
- ⑦ INSTALL 30" PVC C900 PIPE PER DWG RD339, RD345
- ⑧ INSTALL 30" PVC C900 PIPE PER DWG RD339, RD345
- ⑨ INSTALL 12" PVC C900 PIPE PER DWG RD339, RD345
- ⑩ INSTALL 12" PVC C900 PIPE PER DWG RD339, RD345

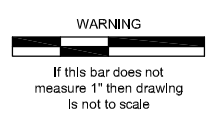
- ① INSTALL 48" CONCRETE SHALLOW SEWER MANHOLE. SEE PROFILE FOR DETAILS AND COA DWGS 402 AND 407
- ② INSTALL 8" PVC C900 SEWER PIPE. SEE PROFILE FOR DETAILS
- ③ CAP END OF 8" PVC 3034 SEWER PIPE



GENERAL NOTES:

- 1) SEE SHEET 11 FOR STORM DRAINAGE TABLES
- 2) EROSION CONTROL MEASURES FOR EXISTING FACILITIES ARE ONLY REQUIRED IF EXCAVATION ACTIVITIES ARE TAKING PLACE ADJACENT TO THE EXISTING FACILITY PRIOR TO THE FACILITY BEING REMOVED

Note:
Elevations are based on
NAVD88 (M.S.L. = 0.00)



RENEWS; December 31, 2026



LINN COUNTY ROAD DEPARTMENT
3010 FERRY STREET SW
ALBANY, OREGON 97322
PHONE: (541) 967-3919
FAX: (541) 924-0202
E-MAIL: Roads@colinn.or.us

COUNTY COMMISSION
ROGER NYQUIST
CHAIRMAN
WILLIAM TUCKER
SHERRIE SPRENGER

ROADMASTER
WAYNE MINK, P.E.
COUNTY ENGINEER
DAINEAL MALONE, P.E.

DATE:	REVISION:	BY:	BRIDGE NO:	DATE:
2/13/25	CHANGED PIPE TYPE TO C900	SSM	0328-0036	1/15/2025
2/13/25	CHANGED PIPE INVERT ELEVATION	SSM	PROJECT NO: CB2101	
			TRS: T. 11 S., R. 03 W., SEC. 10	
			DESIGNED BY: D. Malone	CHECKED BY: D. Malone
			DRAFTED BY: S. MacLean	REVIEWED BY: K. Groom

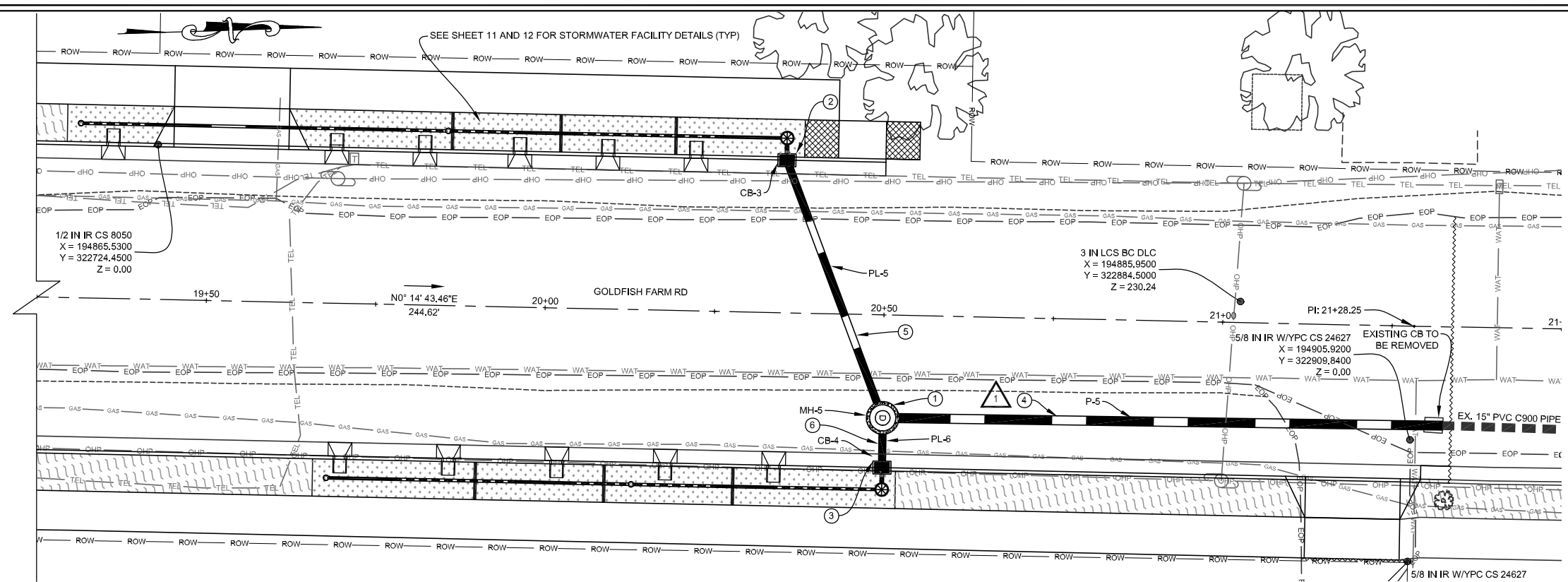
GOLDFISH FARM ROAD
COX CREEK BRIDGE

LINN COUNTY

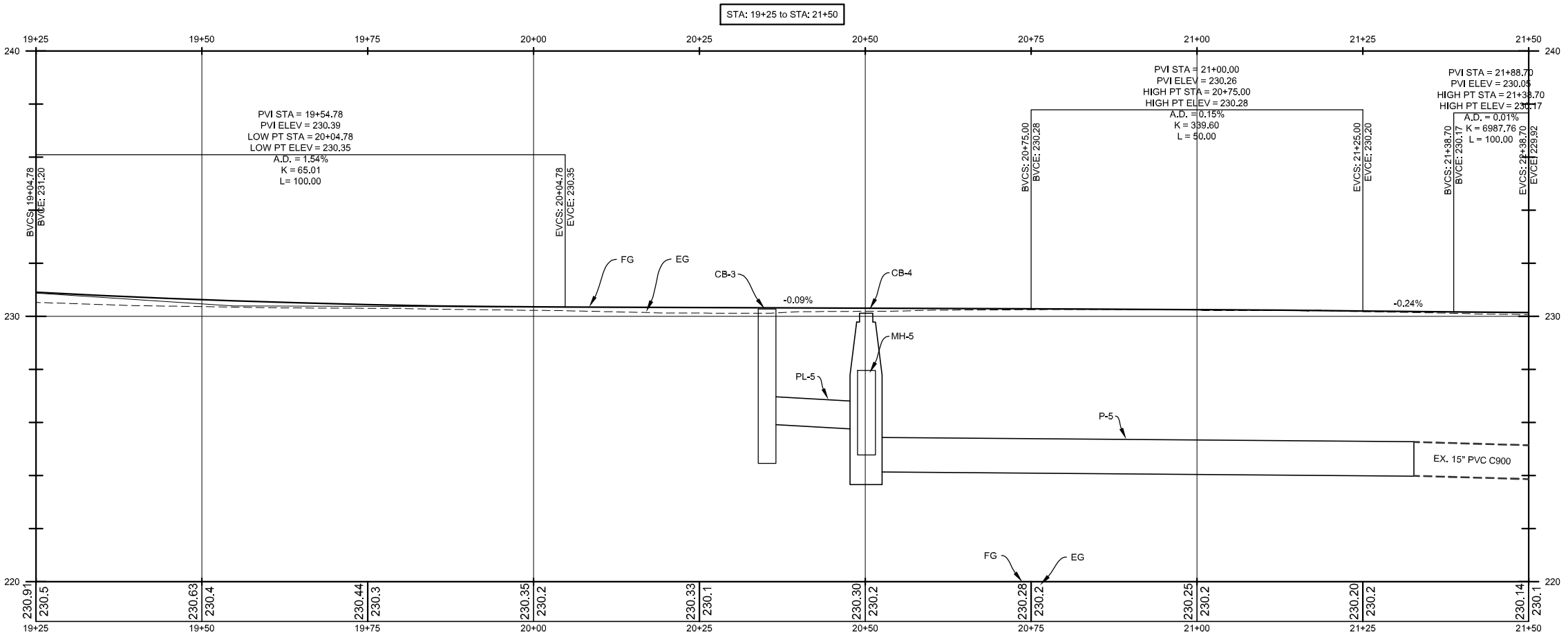
STORM DRAIN AND SEWER
PLAN & PROFILE
STA:14+25 to STA:16+50

SCALE: H 1" = 20'
V 1" = 5'

SHEET 8

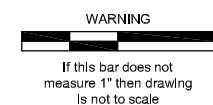


- ① INSTALL 48" CONCRETE CONCENTRIC MANHOLE AT STA: 16+81 LT PER COA DWG 401
- ② INSTALL CONCRETE INLET, TYPE G-2 WITH TYPE 2 GRATE AT STA: 20+35.39 LT PER COA DWG 414, RD339, RD365, RD366
- ③ INSTALL CONCRETE INLET, TYPE G-2 WITH TYPE 2 GRATE AT STA: 20+50 RT PER COA DWG 414, RD339, RD365, RD366 AND SHEET 6
- ④ INSTALL 15" PVC C900 PIPE AND CONNECT TO EXISTING 15" PVC C900 PIPE PER DWG RD339, RD345 AND SHEET 6
- ⑤ INSTALL 12" PVC C900 PIPE PER DWG RD339, RD345
- ⑥ INSTALL 12" PVC C900 PIPE PER DWG RD339, RD345



- GENERAL NOTES:**
- 1) SEE SHEET 11 AND 12 FOR STORM DRAINAGE TABLES
 - 2) EROSION CONTROL MEASURES FOR EXISTING FACILITIES ARE ONLY REQUIRED IF EXCAVATION ACTIVITIES ARE TAKING PLACE ADJACENT TO THE EXISTING FACILITY PRIOR TO THE FACILITY BEING REMOVED.

Note:
Elevations are based on
NAVD88 (M.S.L. = 0.00)



LINN COUNTY ROAD DEPARTMENT
3010 FERRY STREET SW
ALBANY, OREGON 97322
PHONE: (541) 967-3919
FAX: (541) 924-0202
E-MAIL: Roads@co.linn.or.us

COUNTY COMMISSION
ROGER NYQUIST
CHAIRMAN
WILLIAM TUCKER
SHERRIE SPRENGER

ROADMASTER
WAYNE MINK, P.E.
COUNTY ENGINEER
DAINEAL MALONE, P.E.

DATE:	REVISION:	BY:	BRIDGE NO:	DATE:
2/13/25	④ CHANGED PIPE SIZE FROM 12" TO 15"	SSM	0328-0036	1/15/2025
			PROJECT NO: CB2101	
			TRS: T. 11 S., R. 03 W., SEC. 10	
			DESIGNED BY: D. Malone	CHECKED BY: D. Malone
			DRAFTED BY: S. MacLean	REVIEWED BY: K. Groom

GOLDFISH FARM ROAD
COX CREEK BRIDGE

LINN COUNTY

STORM DRAIN
PLAN & PROFILE
STA: 19+25 to STA: 21+50

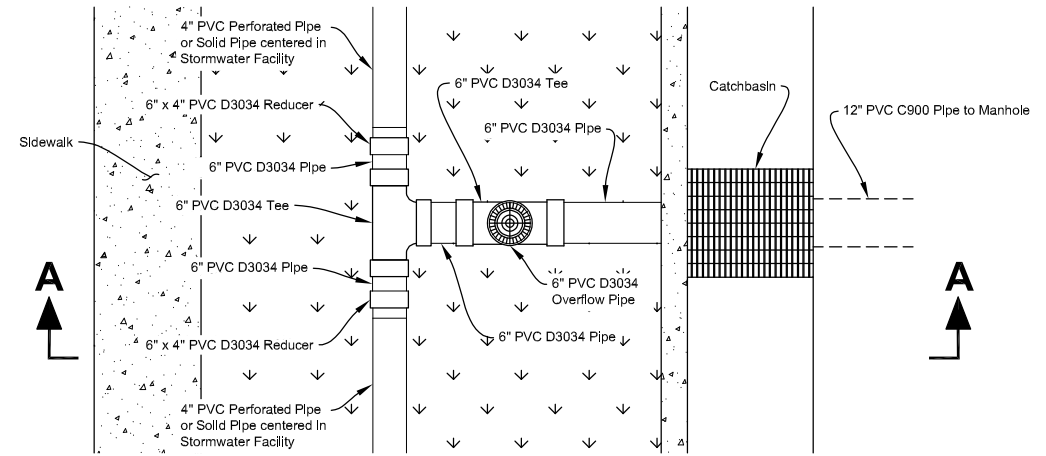
SCALE: H 1" = 20'
V 1" = 5'

SHEET 10

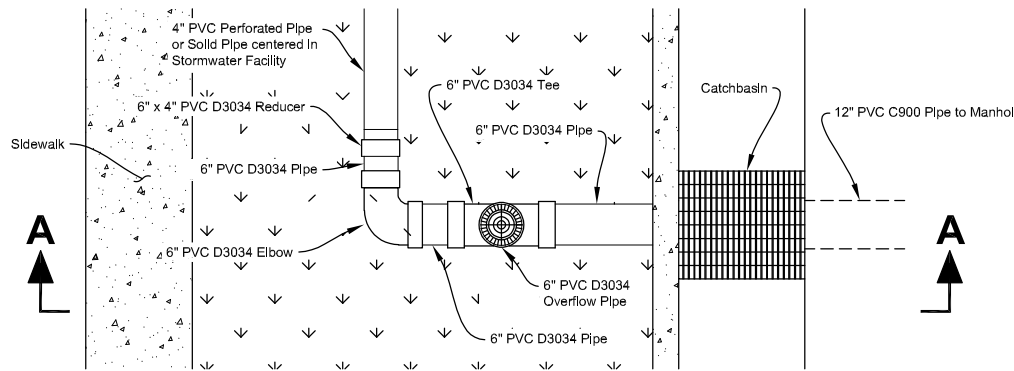
STORM DRAIN MANHOLE TABLE	
NAME	DETAILS
MH-1	48" SHALLOW MANHOLE STA: 14+55.00, 10.05 L RIM ELEV = 231.25 PL-11, 12" IE IN (W) = 228.89 P-1, 30" IE OUT (N) = 226.95
MH-2	48" SHALLOW MANHOLE STA: 15+61.00, 10.01 L RIM ELEV = 231.34 P-1, 30" IE IN (S) = 226.74 PL-4, 12" IE IN (E) = 226.74 PL-3, 12" IE IN (W) = 226.74 P-2, 30" IE OUT (N) = 226.74
MH-3	48" CONCENTRIC MANHOLE STA: 16+81.00, 10.05 L RIM ELEV = 231.91 P-2, 30" IE IN (S) = 226.50 P-3, 30" IE OUT (NW) = 226.50
MH-4	48" SHALLOW MANHOLE STA: 17+09.96, 30.44 L RIM ELEV = 230.43 P-3, 30" IE IN (SE) = 226.42 P-4, 30" IE OUT (N) = 226.42
MH-5	48" CONCENTRIC MANHOLE STA: 20+50.13, 15.18 R RIM ELEV = 230.12 PL-5, 12" IE IN (W) = 225.75 PL-6, 12" IE IN (E) = 226.26 P-5, 15" IE OUT (N) = 224.16

STORM DRAIN BASIN TABLE	
NAME	DETAILS
CB-1	STA: 15+60.99, 19.15 L RIM ELEV = 229.76, SUMP = 1' POF-1, 6" IE IN (W) = 226.76 PL-3, 12" IE OUT (E) = 226.76
CB-2	STA: 15+61.01, 19.28 R RIM ELEV = 229.30, SUMP = 1' POF-2, 6" IE IN (E) = 228.46 PL-4, 12" IE OUT (W) = 226.80
CB-3	STA: 20+35.21, 22.50 L RIM ELEV = 230.27, SUMP = 1' POF-3, 6" IE IN (W) = 226.96 PL-5, 12" IE OUT (E) = 225.96
CB-4	STA: 20+50.19, 22.50 R RIM ELEV = 227.96, SUMP = 1' POF-4, 6" IE IN (E) = 228.94 PL-6, 12" IE OUT (W) = 226.27
FL-1	STA: 14+55.00, 15.00 L RIM ELEV = 230.54, SUMP = 0' PL-11, 12" IE OUT (E) = 228.90

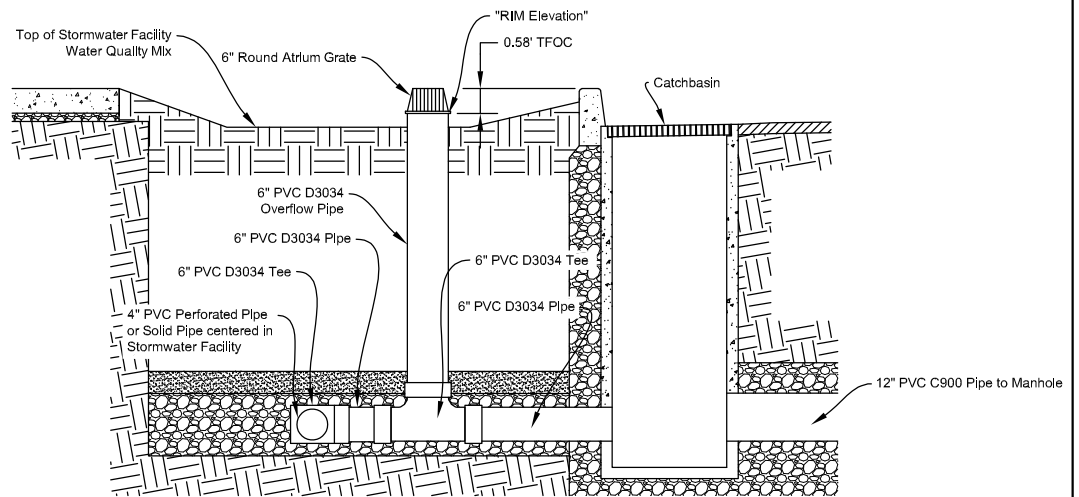
STORM DRAIN PIPE TABLE								
PIPE NO.	SIZE and TYPE	SLOPE	LENGTH (FT)	IE IN STATION and OFFSET	IE IN (FT)	IE OUT STATION and OFFSET	IE OUT (FT)	IE OUT (FT)
P-1	30" PVC C900 PIPE	0.20%	106.02	14+55.00, 10.05 L	226.95	15+61.00, 10.01 L	226.74	226.74
P-2	30" PVC C900 PIPE	0.20%	120.00	15+61.00, 10.01 L	226.74	16+81.00, 10.05 L	226.50	226.50
P-3	30" PVC C900 PIPE	0.23%	35.42	16+81.00, 10.05 L	226.50	17+09.96, 30.44 L	226.42	226.42
P-4	30" CONCRETE PIPE	0.20%	8.00	17+09.96, 30.44 L	226.42	17+17.87, 31.66 L	226.40	226.40
P-5	15" PVC C900 PIPE	0.19%	82.62	20+50.13, 15.18 R	224.16	21+32.70, 14.57 R	224.00	224.00
PL-3	12" PVC C900 PIPE	0.22%	9.14	15+60.99, 19.15 L	226.76	15+61.00, 10.01 L	226.74	226.74
PL-4	12" PVC C900 PIPE	0.20%	29.29	15+61.01, 19.28 R	226.80	15+61.00, 10.01 L	226.74	226.74
PL-5	12" PVC C900 PIPE	0.52%	40.52	20+35.21, 22.50 L	225.96	20+50.13, 15.18 R	225.75	225.75
PL-6	12" PVC C900 PIPE	0.14%	7.32	20+50.19, 22.50 R	226.27	20+50.13, 15.18 R	226.26	226.26
PL-11	12" PVC C900 PIPE	0.20%	4.95	14+55.00, 15.00 L	228.90	14+55.00, 10.05 L	228.89	228.89



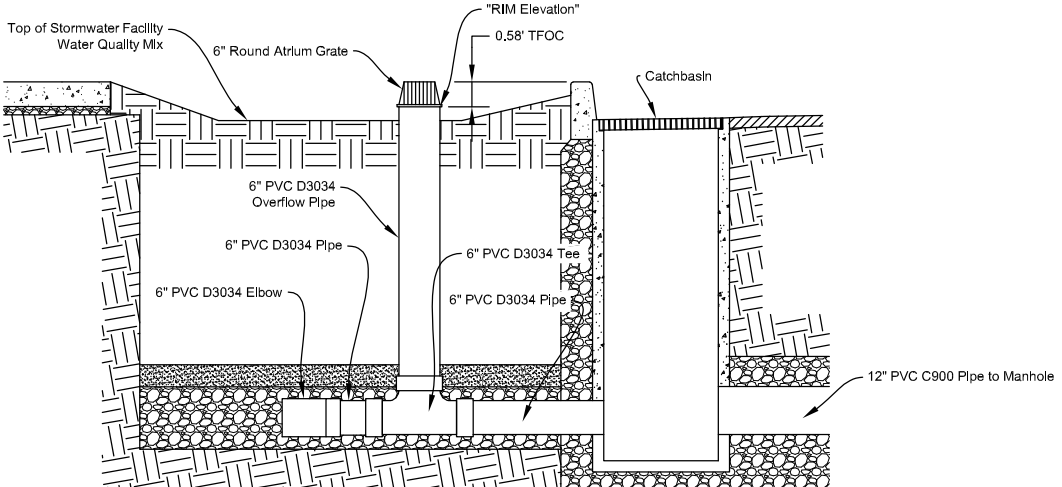
STORMWATER FACILITY PIPE w/ TEE PLAN VIEW



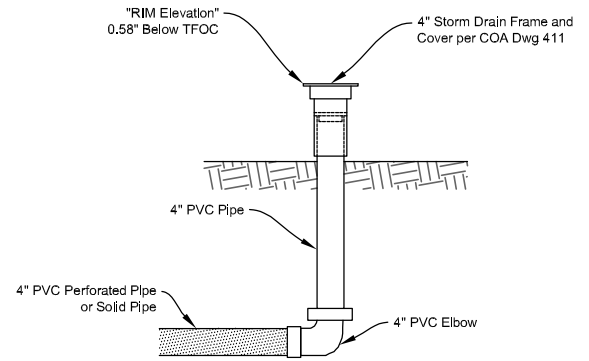
STORMWATER FACILITY PIPE w/ ELBOW PLAN VIEW



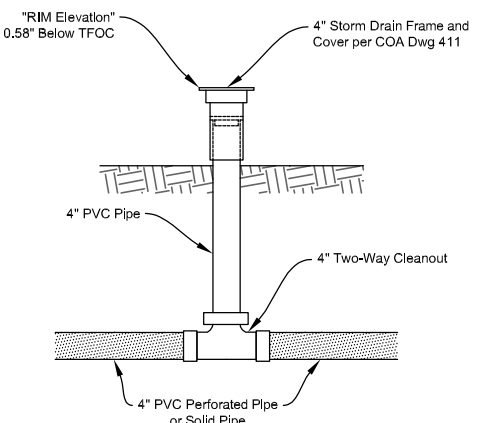
SECTION A-A



SECTION A-A



STORM WATER FACILITY CLEANOUT



STORM WATER FACILITY TWO-WAY CLEANOUT

GENERAL NOTES:
1) SEE STORMWATER FACILITY PIPE STRUCTURE TABLE SHEET FOR ELEVATIONS AND DETAILS



LINN COUNTY ROAD DEPARTMENT
3010 FERRY STREET SW
ALBANY, OREGON 97322
PHONE: (541) 967-3919
FAX: (541) 924-0202
E-MAIL: Roads@co.linn.or.us

COUNTY COMMISSION
ROGER NYQUIST
CHAIRMAN
WILLIAM TUCKER
SHERRIE SPRENGER

ROADMASTER
WAYNE MINK, P.E.
COUNTY ENGINEER
DAINEAL MALONE, P.E.

DATE:	REVISION:	BY:	BRIDGE NO:	DATE:
1/28/25	STORM DRAIN OUTFALL RELOCATED	SSM	0328-0036	1/15/2025
2/13/25	CHANGED PIPE SIZE FROM 12" TO 15"	SSM	PROJECT NO: CB2101	
			TRS: T. 11 S., R. 03 W., SEC. 10	
			DESIGNED BY: D. Malone	CHECKED BY: D. Malone
			DRAFTED BY: S. MacLean	REVIEWED BY: K. Groom

GOLDFISH FARM ROAD
COX CREEK BRIDGE

LINN COUNTY

STORM DRAIN
PIPE AND STRUCTURE TABLES
AND STORMWATER FACILITY
DETAILS

SCALE: no scale

SHEET 11

REGISTERED PROFESSIONAL
ENGINEER
76365

Digitally signed by Daineal Malone
Date: 2025.02.13 12:21:02-08'00'

OREGON
May 23, 2013
DAINEAL LEAH MALONE

RENEWS: December 31, 2026