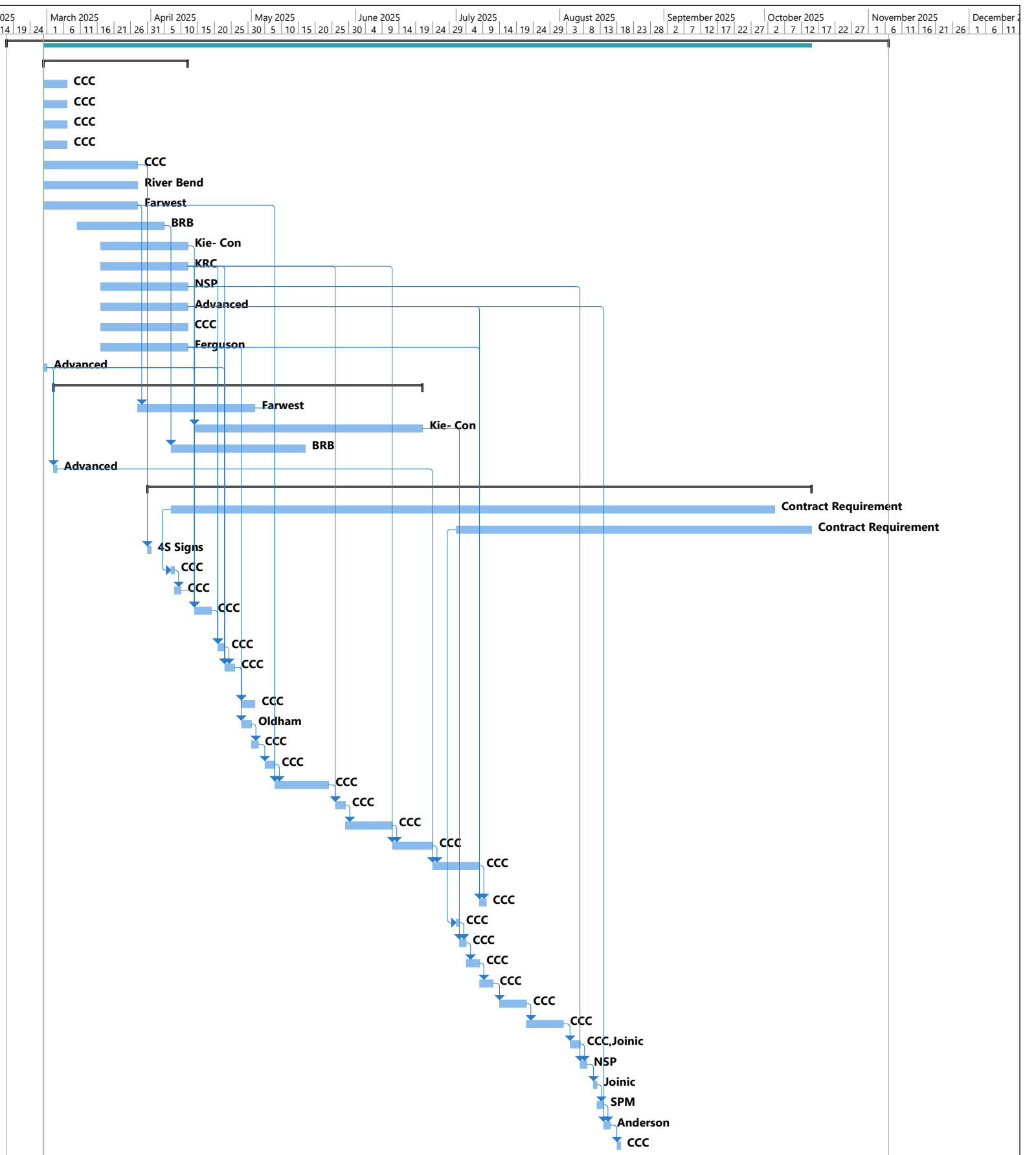


ID	Task Mode	Task Name	Duration	Start	Finish	Predecessors	Successors	Resource Names	ary 2025	March 2025	April 2025	May 2025	June 2025	July 2025	August 2025	September 2025	October 2025	November 2025	December
1	★	Preconstruction	189 days?	Mon 2/17/25	Thu 11/6/25														
2	→	Submittals	31 days?	Fri 2/28/25	Fri 4/11/25														
3	→	List of Subs and Suppliers	5 days	Fri 2/28/25	Thu 3/6/25			CCC											
4	→	Traffic control plan	5 days	Fri 2/28/25	Thu 3/6/25			CCC											
5	→	Erosion Control Plan	5 days	Fri 2/28/25	Thu 3/6/25			CCC											
6	→	PCP	5 days	Fri 2/28/25	Thu 3/6/25			CCC											
7	→	Subcontracts	20 days	Fri 2/28/25	Thu 3/27/25		26	CCC											
8	→	Concrete Mix designs	20 days	Fri 2/28/25	Thu 3/27/25			River Bend											
9	→	Rebar	20 days	Fri 2/28/25	Thu 3/27/25		19,36	Farwest											
10	→	Bearing Pads	20 days	Mon 3/10/25	Fri 4/4/25		21	BRB											
11	→	Precast Box Beams	20 days	Mon 3/17/25	Fri 4/11/25		20	Kie- Con											
12	→	Aggregates	20 days	Mon 3/17/25	Fri 4/11/25		29,30,31,37,39	KRC											
13	→	HMAC	20 days	Mon 3/17/25	Fri 4/11/25		49	NSP											
14	→	Landscaping	20 days	Mon 3/17/25	Fri 4/11/25		41,52	Advanced											
15	→	Bridge Removal Plan	20 days	Mon 3/17/25	Fri 4/11/25			CCC											
16	→	Pipe submittal	20 days	Mon 3/17/25	Fri 4/11/25		29,32,31,30,41	Ferguson											
17	→	Precast Concrete Drainage Structures	1 day?	Fri 2/28/25	Fri 2/28/25		22,31,30,29	Advanced											
18	→	Procurement	80 days?	Mon 3/3/25	Fri 6/20/25														
19	→	Rebar	25 days	Fri 3/28/25	Thu 5/1/25	9	36	Farwest											
20	→	Precast Girders	50 days	Mon 4/14/25	Fri 6/20/25	11	43	Kie- Con											
21	→	Bearing Pads	30 days	Mon 4/7/25	Fri 5/16/25	10		BRB											
22	→	Precast Concrete Drainage Structure	1 day?	Mon 3/3/25	Mon 3/3/25	17	40	Advanced											
23	→	Construction	142 days	Mon 3/31/25	Tue 10/14/25														
24	→	180 Road Closure	130 days	Mon 4/7/25	Fri 10/3/25		27SS	Contract Requirement											
25	→	In water Work Window	76 days	Tue 7/1/25	Tue 10/14/25		42SS	Contract Requirement											
26	→	Intall Temporary Signs and PCMS	1 day	Mon 3/31/25	Mon 3/31/25	7		4S Signs											
27	→	Close Road and install EC devices	1 day	Mon 4/7/25	Mon 4/7/25	24SS	28	CCC											
28	→	Removal of structures / Clearing and Grubbing	2 days	Tue 4/8/25	Wed 4/9/25	27	29	CCC											
29	→	Ste. 14+50 to 17+50 Insall 30"SP, Manholes inlet and related	5 days	Mon 4/14/25	Fri 4/18/25	28,16,17,12	30	CCC											
30	→	Sta 15+10 to 15+75 Install 8"SS and Manhole	2 days	Mon 4/21/25	Tue 4/22/25	29,16,17,12	31	CCC											
31	→	Sta. 19+00 to 28+50 Instal 12" & 15" SP G2 inlet Manhole, and related	3 days	Wed 4/23/25	Fri 4/25/25	30,16,17,12	33,32	CCC											
32	→	2 inch water Service and Hydrant extensions	4 days	Mon 4/28/25	Thu 5/1/25	31,16		CCC											
33	→	Drive Piling	3 days	Mon 4/28/25	Wed 4/30/25	31	34	Oldham											
34	→	Remove Existing bridge to OWW	2 days	Thu 5/1/25	Fri 5/2/25	33	35	CCC											
35	→	Structure excavation / Class 100 Riprap	3 days	Mon 5/5/25	Wed 5/7/25	34	36	CCC											
36	→	FRPSC Bt. 1 & 2 Pile Caps and Wingwall	12 days	Thu 5/8/25	Fri 5/23/25	35,9,19	37	CCC											
37	→	Backfill Bt 1&2 Pile caps	3 days	Mon 5/26/25	Wed 5/28/25	36,12	38	CCC											
38	→	General Excavation - roadway Section	10 days	Thu 5/29/25	Wed 6/11/25	37	39	CCC											
39	→	Aggregate base	8 days	Thu 6/12/25	Mon 6/23/25	38,12	40	CCC											
40	→	Minor Structure Concrete - Curbs, gutters, Sidewalks, Drives, ADA ramps	10 days	Tue 6/24/25	Mon 7/7/25	39,22	41	CCC											
41	→	Road Side Shallow Swales	2 days	Tue 7/8/25	Wed 7/9/25	40,14,16		CCC											
42	→	Remove existing piling inOHW	1 day	Tue 7/1/25	Tue 7/1/25	25SS	43	CCC											
43	→	Set 33" Box Beams	2 days	Wed 7/2/25	Thu 7/3/25	42,20	44	CCC											
44	→	Pin and Grout 33" Box Beams	2 days	Fri 7/4/25	Mon 7/7/25	43	45	CCC											
45	→	FRPS Back walls	4 days	Tue 7/8/25	Fri 7/11/25	44	46	CCC											
46	→	FRPSC Impact Panel	6 days	Mon 7/14/25	Mon 7/21/25	45	47	CCC											
47	→	FRPSC Combination Rail	9 days	Tue 7/22/25	Fri 8/1/25	46	48	CCC											
48	→	Prep to pave Rolled Waterproofing Membrane	3 days	Mon 8/4/25	Wed 8/6/25	47	49	CCC,Joinic											
49	→	Level 3 ACP	2 days	Thu 8/7/25	Fri 8/8/25	48,13	50	NSP											
50	→	Poured Joint Seals	1 day	Mon 8/11/25	Mon 8/11/25	49	51	Joinic											
51	→	Struping	2 days	Tue 8/12/25	Wed 8/13/25	50	52	SPM											
52	→	Final seeding	2 days	Thu 8/14/25	Fri 8/15/25	51,14	53	Anderson											
53	→	Open Road	1 day	Mon 8/18/25	Mon 8/18/25	52		CCC											



Project: Cox Creek Baseline Sch
Date: Fri 2/28/25

Task	Summary	Inactive Milestone	Duration-only	Start-only	External Milestone	Manual Progress
Split	Project Summary	Inactive Summary	Manual Summary Rollup	Finish-only	Deadline	
Milestone	Inactive Task	Manual Task	Manual Summary	External Tasks	Progress	